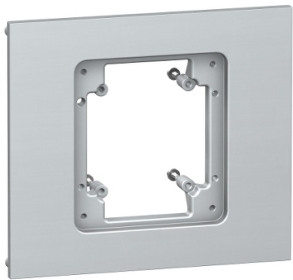


# Product data sheet

Specifications



## industrial power outlet mounting kit - for interface

PRA90067

⚠ Discontinued on: Jul 17, 2020

⚠ End-of-service on: Sep 22, 2020

⚠ Discontinued

### Main

Range Of Product	Pragma
Product Or Component Type	Mounting kit
Device Short Name	industrial power outlets kit
Accessory / Separate Part Category	Mounting accessory

### Complementary

Enclosure Mounting	Surface
Number Of Horizontal Rows	1
Number Of 18 Mm Modules Per Row	13 18 24
Colour	Grey (RAL 7035)

### Packing Units

Unit Type Of Package 1	PCE
Number Of Units In Package 1	1
Package 1 Height	2 cm
Package 1 Width	14.8 cm
Package 1 Length	16.8 cm
Package 1 Weight	126 g

### Contractual warranty

Warranty	18 months
----------	-----------

Disclaimer: This documentation is not intended as a substitute for and is not to be used for determining suitability or reliability of these products for specific user applications

## Sustainability

**Green Premium™ label** is Schneider Electric's commitment to delivering products with best-in-class environmental performance. Green Premium promises compliance with the latest regulations, transparency on environmental impacts, as well as circular and low-CO<sub>2</sub> products.

**Guide to assessing product sustainability** is a white paper that clarifies global eco-label standards and how to interpret environmental declarations.

[Learn more about Green Premium >](#)

[Guide to assess a product's sustainability >](#)



Transparency   RoHS/REACH

## Well-being performance

✓ Reach Free Of Svhc

✓ Toxic Heavy Metal Free

✓ Mercury Free

✓ Rohs Exemption Information   [Yes](#)

## Certifications & Standards

Eu Rohs Directive	Pro-active compliance (Product out of EU RoHS legal scope) <a href="#">EU RoHS Declaration</a>
-------------------	---

China Rohs Regulation	<a href="#">China RoHS declaration</a> Pro-active China RoHS declaration (out of China RoHS legal scope)
-----------------------	---

Environmental Disclosure	<a href="#">Product Environmental Profile</a>
--------------------------	---