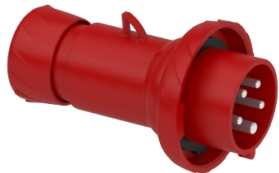


Product data sheet

Specifications



Wander plug, Mureva PK, Fast connection, 16A, 3P+N+E, 400V, IP67

PKX16M735

Main

Range	Mureva
Product Or Component Type	Wander plug
Device Short Name	Mureva plug
Plug, Socket Category	Low voltage
Poles Description	3P + N + E
Network Type	AC
Outlet Standard	Industrial

Complementary

Plug, Socket, Control Station Shape	Straight
[In] Rated Current	16 A
[Ue] Rated Operational Voltage	380...415 V
Network Frequency	50/60 Hz
Ground Lug Clockwise Position	6 h
Plug, Socket Material	Housing: self-extinguishing engineering polymer
Contacts Material	Sleeves: brass
Connections - Terminals	Fast connection
Cable Cross Section	1...2.5 mm²
Cable Outer Diameter	8...15 mm
Cable Entry	Cable gland Fair lead
Thread Type	Pg 21
Net Weight	0.244 kg
Height	142 mm
Width	89 mm
Depth	89 mm
Colour	Grey (RAL 7035)
Voltage Colour	Red

Environment

Standards	IEC 60309-2 IEC 60309-1
-----------	----------------------------

Disclaimer: This documentation is not intended as a substitute for and is not to be used for determining suitability or reliability of these products for specific user applications

Ip Degree Of Protection	IP67 conforming to IEC 60529
Ik Degree Of Protection	IK08 conforming to EN 62262
Fire Resistance	850 °C conforming to IEC 60695-2-11
Relative Humidity	50 % at 40 °C 70 % at 30 °C 90 % at 20 °C
Operating Altitude	2000 m
Ambient Air Temperature For Operation	35 °C (86400 s) -25...40 °C

Packing Units

Unit Type Of Package 1	PCE
Number Of Units In Package 1	1
Package 1 Height	9.000 cm
Package 1 Width	9.000 cm
Package 1 Length	15.300 cm
Package 1 Weight	229.700 g
Unit Type Of Package 2	BB1
Number Of Units In Package 2	10
Package 2 Height	17.800 cm
Package 2 Width	27.000 cm
Package 2 Length	27.200 cm
Package 2 Weight	2.469 kg
Unit Type Of Package 3	S03
Number Of Units In Package 3	20
Package 3 Height	30.000 cm
Package 3 Width	30.000 cm
Package 3 Length	40.000 cm
Package 3 Weight	5.357 kg

Contractual warranty

Warranty	18 months
----------	-----------

Sustainability

Green Premium™ label is Schneider Electric's commitment to delivering products with best-in-class environmental performance. Green Premium promises compliance with the latest regulations, transparency on environmental impacts, as well as circular and low-CO₂ products.

Guide to assessing product sustainability is a white paper that clarifies global eco-label standards and how to interpret environmental declarations.

[Learn more about Green Premium >](#)

[Guide to assess a product's sustainability >](#)



Transparency RoHS/REACH

Well-being performance

 Rohs Exemption Information [Yes](#)

Certifications & Standards

Reach Regulation	REACH Declaration
Eu Rohs Directive	Compliant with Exemptions
China Rohs Regulation	China RoHS declaration Product out of China RoHS scope. Substance declaration for your information
Environmental Disclosure	Product Environmental Profile
Weee	The product must be disposed on European Union markets following specific waste collection and never end up in rubbish bins
Circularity Profile	No need of specific recycling operations