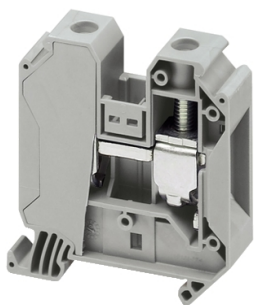


Product data sheet

Specifications



Terminal block, Linergy TR, grey,
35mm², passthrough, 2 points, set
of 10

NSYTRV352

Main

Range	Linergy
Product Name	Linergy TR
Product Or Component Type	Terminal block
Device Short Name	TRV
Terminal Block Type	Passthrough
Terminal Block Level	1
Mounting Mode	Clip-on
Nominal Cross Section	35 mm ²
Length	60.2 mm
Colour	Grey
Quantity Per Set	Set of 50

Complementary

Width	16 mm
Height	65.7 mm
Connections - Terminals	1 x screw terminal: upstream 1 x screw terminal: downstream
Number Of Connections	2
Connection Position	Sideways
Number Of Measurement Input	2
Cable Cross Section	1.5...50 mm ² , flexible cable without cable end 1.5...50 mm ² , solid cable
Tightening Torque	3.2...3.7 N.m
Wire Stripping Length	18 mm
Tool Type	Connection: screwdriver Disconnection: screwdriver
[Ue] Rated Operational Voltage	1000 V conforming to EN/IEC 60947-7-1 600 V CSA 690 V conforming to ATEX Exe II Ex II 2 GD 600 V cURus
[In] Rated Current	125 A conforming to EN/IEC 60947-7-1 150 A cURus 150 A CSA 126 A conforming to ATEX Exe II Ex II 2 GD
Material	Polyamide 6/6: insulating case

Disclaimer: This documentation is not intended as a substitute for and is not to be used for determining suitability or reliability of these products for specific user applications

Dielectric Loss	0.01 at 1 MHz conforming to IEC 60250 0.01 at 1 MHz conforming to VDE 0303-T4
Dielectric Constant	3.7 at 1 MHz
Resistivity	10000 MΩ.m conforming to IEC 60093 10000 MΩ.m conforming to VDE 0303-T30
Surface Resistance	1000 GΩ conforming to IEC 60093 1000 GΩ conforming to VDE 0303-T30
Creep Resistance	500 CTI (> 400 kV) conforming to IEC 60093 500 CTI (> 400 kV) conforming to VDE 0303-T30
Flame Retardance	V0, thickness 0.8 mm conforming to UL 94
Net Weight	61 g
Range Compatibility	Prisma G Prisma P Prisma PH Prisma Pack Spacial Kaedra Pragma TeSys
Product Compatibility	Spacial enclosures

Environment

Product Certifications	ATEX IEC-Ex VDE EAC GL CSA cURus
Dielectric Strength	1000 V conforming to IEC 60243-1
Ambient Air Temperature For Operation	-40...130 °C conforming to IEC 60216-1 -40...130 °C conforming to VDE 0304-T21

Packing Units

Unit Type Of Package 1	PCE
Number Of Units In Package 1	1
Package 1 Height	9.600 cm
Package 1 Width	17.700 cm
Package 1 Length	28.000 cm
Package 1 Weight	57.000 g
Unit Type Of Package 2	BB1
Number Of Units In Package 2	50
Package 2 Height	9.600 cm
Package 2 Width	17.700 cm
Package 2 Length	28.000 cm
Package 2 Weight	2.991 kg
Unit Type Of Package 3	P06
Number Of Units In Package 3	2000
Package 3 Height	75.000 cm
Package 3 Width	60.000 cm

Package 3 Length	80.000 cm
Package 3 Weight	133.720 kg

Contractual warranty

Warranty	18 months
----------	-----------

Sustainability

Green Premium™ label is Schneider Electric's commitment to delivering products with best-in-class environmental performance. Green Premium promises compliance with the latest regulations, transparency on environmental impacts, as well as circular and low-CO₂ products.

Guide to assessing product sustainability is a white paper that clarifies global eco-label standards and how to interpret environmental declarations.

[Learn more about Green Premium >](#)

[Guide to assess a product's sustainability >](#)



Transparency RoHS/REACH

Well-being performance

✓ Reach Free Of Svhc

✓ Toxic Heavy Metal Free

✓ Mercury Free

✓ Rohs Exemption Information [Yes](#)

✓ Halogen Free Plastic Parts Product

Certifications & Standards

Reach Regulation	REACH Declaration
Eu Rohs Directive	Compliant EU RoHS Declaration
China Rohs Regulation	China RoHS declaration Pro-active China RoHS declaration (out of China RoHS legal scope)
Environmental Disclosure	Product Environmental Profile
Weee	The product must be disposed on European Union markets following specific waste collection and never end up in rubbish bins
Circularity Profile	No need of specific recycling operations