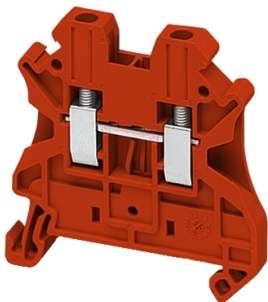


# Product data sheet

Specifications



## Terminal block, Linergy TR, red, 2.5mm<sup>2</sup>, passthrough, 2 points, set of 10

NSYTRV22RD

### Main

Range	Linerger
Product Name	Linerger TR
Product Or Component Type	Terminal block
Device Short Name	TRV
Accessory / Separate Part Category	Connection accessory
Terminal Block Type	Passthrough
Terminal Block Level	1
Mounting Mode	Clip-on
Nominal Cross Section	2.5 mm <sup>2</sup>
Length	47.7 mm
Colour	Red
Quantity Per Set	Set of 50

### Complementary

Width	5.2 mm
Height	47.5 mm
Connections - Terminals	1 x screw terminal: upstream (M3) 1 x screw terminal: downstream (M3)
Number Of Connections	2
Connection Position	Sideways
Number Of Measurement Input	2
Cable Cross Section	0.14...4 mm <sup>2</sup> , solid cable with cable end 0.2...2.5 mm <sup>2</sup> , flexible cable with cable end 0.14...4 mm <sup>2</sup> , solid cable without cable end 0.14...4 mm <sup>2</sup> , flexible cable without cable end
Tightening Torque	0.5...0.6 N.m
Wire Stripping Length	9 mm
Tool Type	Connection: screwdriver Disconnection: screwdriver
[Ue] Rated Operational Voltage	1000 V conforming to EN/IEC 60947-7-1 600 V CSA 690 V conforming to ATEX Exe II Ex II 2 GD 600 V cURus

Disclaimer: This documentation is not intended as a substitute for and is not to be used for determining suitability or reliability of these products for specific user applications

[In] Rated Current	24 A conforming to EN/IEC 60947-7-1 22 A conforming to ATEX Exe II Ex II 2 GD 20 A cURus 20 A CSA
Material	Polyamide 6/6: insulating case Copper alloy: connector and screw Copper alloy: commoning link Chromium-nickel steel: spring
Dielectric Loss	0.01 at 1 MHz conforming to IEC 60250 0.01 at 1 MHz conforming to VDE 0303-T4
Dielectric Constant	3.7 at 1 MHz
Resistivity	10000 MΩ.m conforming to IEC 60093 10000 MΩ.m conforming to VDE 0303-T30
Surface Resistance	1000 GΩ conforming to IEC 60093 1000 GΩ conforming to VDE 0303-T30
Creep Resistance	500 CTI (> 400 kB) conforming to IEC 60093 500 CTI (> 400 kB) conforming to VDE 0303-T30
Flame Retardance	V0, thickness0.8 mm conforming to UL 94
Net Weight	8.2 g
Range Compatibility	Prisma G Prisma P Prisma PH Prisma Pack Spacial Kaedra Pragma TeSys
Product Compatibility	Spacial enclosures

## Environment

Product Certifications	LR DNV EAC cURus IEC-Ex GL VDE ATEX CSA
Dielectric Strength	1000 V conforming to IEC 60243-1
Ambient Air Temperature For Operation	-40...130 °C conforming to IEC 60216-1 -40...130 °C conforming to VDE 0304-T21

## Packing Units

Unit Type Of Package 1	PCE
Number Of Units In Package 1	1
Package 1 Height	5 cm
Package 1 Width	6.8 cm
Package 1 Length	25.2 cm
Package 1 Weight	7 g
Unit Type Of Package 2	BB1
Number Of Units In Package 2	50
Package 2 Height	5 cm
Package 2 Width	6.8 cm

Package 2 Length	25.2 cm
Package 2 Weight	400 g
Unit Type Of Package 3	S03
Number Of Units In Package 3	1350
Package 3 Height	30 cm
Package 3 Width	30 cm
Package 3 Length	40 cm
Package 3 Weight	11.282 kg

## Contractual warranty

Warranty	18 months
----------	-----------

## Sustainability

**Green Premium™** label is Schneider Electric's commitment to delivering products with best-in-class environmental performance. Green Premium promises compliance with the latest regulations, transparency on environmental impacts, as well as circular and low-CO<sub>2</sub> products.

**Guide to assessing product sustainability** is a white paper that clarifies global eco-label standards and how to interpret environmental declarations.

[Learn more about Green Premium >](#)

[Guide to assess a product's sustainability >](#)



Transparency   RoHS/REACH

## Well-being performance

✓ Mercury Free

✓ Rohs Exemption Information   [Yes](#)

✓ Halogen Free Plastic Parts Product

## Certifications & Standards

Reach Regulation	<a href="#">REACH Declaration</a>
Eu Rohs Directive	Compliant with Exemptions
China Rohs Regulation	<a href="#">China RoHS declaration</a> Product out of China RoHS scope. Substance declaration for your information
Environmental Disclosure	<a href="#">Product Environmental Profile</a>
Weee	The product must be disposed on European Union markets following specific waste collection and never end up in rubbish bins
Circularity Profile	No need of specific recycling operations
California Proposition 65	WARNING: This product can expose you to chemicals including: Lead and lead compounds, which is known to the State of California to cause cancer and birth defects or other reproductive harm. For more information go to <a href="#">www.P65Warnings.ca.gov</a>