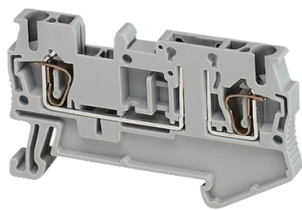


Product data sheet

Specifications



Terminal block, spring type, Lineryg
TR, Removable carrier disconnect, 2
points, 4mm², grey

NSYTRR22TB

Main

Range	Lineryg
Product Name	Lineryg TR
Product Or Component Type	Terminal block
Device Short Name	TRR
Terminal Block Type	Removable carrier disconnect
Associated Connection Component	Blade Diode Cylindrical fuse
Terminal Block Level	1
Mounting Mode	Clip-on
Nominal Cross Section	2.5 mm ²
Length	60.5 mm
Colour	Grey
Quantity Per Set	Set of 50

Complementary

Fuse Size	5 x 20 mm 6 x 32 mm
Width	5.2 mm
Height	36.5 mm
Connections - Terminals	1 x spring terminal: upstream 1 x spring terminal: downstream
Number Of Connections	2
Connection Position	Top
Number Of Measurement Input	2
Cable Cross Section	0.08...2.5 mm ² , flexible without cable end 0.8...4 mm ² , solid
Wire Stripping Length	10 mm
Tool Type	Disconnection: flat screwdriver Connection: flat screwdriver
[Ue] Rated Operational Voltage	400 V conforming to EN/IEC 60947-7-1 300 V cURus 300 V CSA
[In] Rated Current	20 A conforming to EN/IEC 60947-7-1 16 A CSA 16 A cURus

Disclaimer: This documentation is not intended as a substitute for and is not to be used for determining suitability or reliability of these products for specific user applications

Material	Polyamide 6/6: insulating case
Dielectric Loss	0.01 at 1 MHz conforming to IEC 60250 0.01 at 1 MHz conforming to VDE 0303-T4
Dielectric Constant	3.7 at 1 MHz
Resistivity	10000 MΩ.m conforming to IEC 60093 10000 MΩ.m conforming to VDE 0303-T30
Surface Resistance	1000 GΩ conforming to IEC 60093 1000 GΩ conforming to VDE 0303-T30
Creep Resistance	500 CTI (> 400 kV) conforming to IEC 60093 500 CTI (> 400 kV) conforming to VDE 0303-T30
Flame Retardance	V0, thickness 0.8 mm conforming to UL 94
Net Weight	7.7 g
Range Compatibility	Prisma G Prisma P Prisma PH Prisma Pack Spacial Kaedra Pragma TeSys
Product Compatibility	Spacial enclosures

Environment

Product Certifications	cURus EAC CSA
Dielectric Strength	1000 V conforming to IEC 60243-1
Ambient Air Temperature For Operation	-40...130 °C conforming to IEC 60216-1 -40...130 °C conforming to VDE 0304-T21

Packing Units

Unit Type Of Package 1	PCE
Number Of Units In Package 1	1
Package 1 Height	4.5 cm
Package 1 Width	7.0 cm
Package 1 Length	27.0 cm
Package 1 Weight	7.0 g
Unit Type Of Package 2	BB1
Number Of Units In Package 2	50
Package 2 Height	4.5 cm
Package 2 Width	7.0 cm
Package 2 Length	27.0 cm
Package 2 Weight	380.0 g
Unit Type Of Package 3	S02
Number Of Units In Package 3	650
Package 3 Height	15.0 cm
Package 3 Width	30.0 cm
Package 3 Length	40.0 cm

Package 3 Weight	5.344 kg
------------------	----------

Sustainability

Green Premium™ label is Schneider Electric's commitment to delivering products with best-in-class environmental performance. Green Premium promises compliance with the latest regulations, transparency on environmental impacts, as well as circular and low-CO₂ products.

Guide to assessing product sustainability is a white paper that clarifies global eco-label standards and how to interpret environmental declarations.

[Learn more about Green Premium >](#)

[Guide to assess a product's sustainability >](#)



Transparency RoHS/REACH

Well-being performance

✓ Reach Free Of Svhc

✓ Toxic Heavy Metal Free

✓ Mercury Free

✓ Rohs Exemption Information Yes

✓ Halogen Free Plastic Parts Product

Certifications & Standards

Reach Regulation	REACH Declaration
Eu Rohs Directive	Pro-active compliance (Product out of EU RoHS legal scope) EU RoHS Declaration
China Rohs Regulation	China RoHS declaration Pro-active China RoHS declaration (out of China RoHS legal scope)
Environmental Disclosure	Product Environmental Profile
Circularity Profile	No need of specific recycling operations