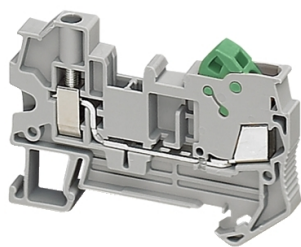


Product data sheet

Specifications



Terminal block, Linergy TR, hybrid, feed through, 2 points, screw-IDC, 2.5mm², grey

NSYTRH22

⚠ Discontinued on: Aug 31, 2023

⚠ Discontinued

Main

Range	Linergy
Product Name	TR
Product Or Component Type	Terminal block
Device Short Name	TRH
Accessory / Separate Part Category	Connection accessory
Terminal Block Type	Passthrough
Terminal Block Level	1
Mounting Mode	Clip-on
Nominal Cross Section	2.5 mm ²
Length	62.6 mm
Colour	Grey
Quantity Per Set	Set of 50

Complementary

Width	6.2 mm
Height	42.8 mm
Connections - Terminals	1 x screw terminal: upstream (M4) 1 x IDC: downstream (M4)
Number Of Connections	2
Connection Position	Top
Number Of Measurement Input	2
Cable Cross Section	Upstream: 0.14...6 mm ² , solid Downstream: 0.2...2.5 mm ² , flexible with cable end Upstream: 0.2...2.5 mm ² , flexible without cable end
Tightening Torque	1.5...1.8 N.m
Wire Stripping Length	10 mm
Tool Type	Connection: screwdriver Disconnection: screwdriver Without tool
[Ue] Rated Operational Voltage	800 V conforming to EN/IEC 60947-7-1 600 V cURus 600 V CSA 550 V conforming to ATEX Exe II Ex II 2 GD

Disclaimer: This documentation is not intended as a substitute for and is not to be used for determining suitability or reliability of these products for specific user applications

[In] Rated Current	24 A conforming to EN/IEC 60947-7-1 15 A cURus 15 A CSA 22 A conforming to ATEX Exe II Ex II 2 GD
Material	Polyamide 6/6: insulating case Copper alloy: connector and screw Copper alloy: commoning link Chromium-nickel steel: spring
Dielectric Loss	0.01 at 1 MHz conforming to IEC 60250 0.01 at 1 MHz conforming to VDE 0303-T4
Dielectric Constant	3.7 at 1 MHz
Resistivity	10000 MΩ.m conforming to IEC 60093 10000 MΩ.m conforming to VDE 0303-T30
Surface Resistance	1000 GΩ conforming to IEC 60093 1000 GΩ conforming to VDE 0303-T30
Creep Resistance	500 CTI (> 400 kV) conforming to IEC 60093 500 CTI (> 400 kV) conforming to VDE 0303-T30
Flame Retardance	V0, thickness 0.8 mm conforming to UL 94
Net Weight	11.3 g
Range Compatibility	Prisma G Prisma P Prisma PH Prisma Pack Spacial Kaedra Pragma TeSys
Product Compatibility	Spacial enclosures

Environment

Product Certifications	CSA IEC-Ex EAC cURus ATEX
Dielectric Strength	1000 V conforming to IEC 60243-1
Ambient Air Temperature For Operation	-40...130 °C conforming to IEC 60216-1 -40...130 °C conforming to VDE 0304-T21

Packing Units

Unit Type Of Package 1	PCE
Number Of Units In Package 1	1
Package 1 Height	5.0 cm
Package 1 Width	7.0 cm
Package 1 Length	27.0 cm
Package 1 Weight	11.0 g
Unit Type Of Package 2	CAR
Number Of Units In Package 2	50
Package 2 Height	5.0 cm
Package 2 Width	7.0 cm
Package 2 Length	27.0 cm
Package 2 Weight	612.0 g

Sustainability

Green Premium™ label is Schneider Electric's commitment to delivering products with best-in-class environmental performance. Green Premium promises compliance with the latest regulations, transparency on environmental impacts, as well as circular and low-CO₂ products.

Guide to assessing product sustainability is a white paper that clarifies global eco-label standards and how to interpret environmental declarations.

[Learn more about Green Premium >](#)

[Guide to assess a product's sustainability >](#)



RoHS/REACH

Well-being performance

✓ Mercury Free

✓ Rohs Exemption Information [Yes](#)

✓ Halogen Free Plastic Parts Product

Certifications & Standards

Reach Regulation	REACH Declaration
Eu Rohs Directive	Pro-active compliance (Product out of EU RoHS legal scope)
China Rohs Regulation	China RoHS declaration Product out of China RoHS scope. Substance declaration for your information
Circularity Profile	No need of specific recycling operations
California Proposition 65	WARNING: This product can expose you to chemicals including: Nickel (Metallic), which is known to the State of California to cause cancer. For more information go to www.P65Warnings.ca.gov