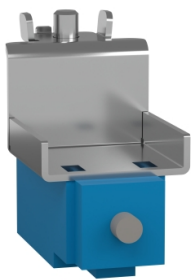


# Product data sheet

Specifications



## Thala Door switch 3 A/240 V AC for PLA enclosure

NSYSNLPLA

### Main

Range	Thalassa
Product Or Component Type	Door switch
Application	Multi-purpose
Nominal Dimensions Of The Housing	-
Mounting Location	Enclosure
Range Compatibility	Thalassa PLA enclosure
Device Composition	Fixing elements 1 x switch/commutator unit 1 x fixing support

### Complementary

Fixing Mode	Direct fixing - enclosure location
Input Type	NC + NO
Absolute Maximum Input	3 A/240 V

### Packing Units

Unit Type Of Package 1	PCE
Number Of Units In Package 1	1
Package 1 Height	4.000 cm
Package 1 Width	5.000 cm
Package 1 Length	13.000 cm
Package 1 Weight	233.000 g
Unit Type Of Package 2	S03
Number Of Units In Package 2	40
Package 2 Height	30.000 cm
Package 2 Width	30.000 cm
Package 2 Length	40.000 cm
Package 2 Weight	9.780 kg
Unit Type Of Package 3	P12
Number Of Units In Package 3	320
Package 3 Height	45.000 cm
Package 3 Width	80.000 cm

Disclaimer: This documentation is not intended as a substitute for and is not to be used for determining suitability or reliability of these products for specific user applications

Package 3 Length	120.000 cm
Package 3 Weight	91.040 kg

## Contractual warranty

Warranty	18 months
----------	-----------

## Sustainability

**Green Premium™ label** is Schneider Electric's commitment to delivering products with best-in-class environmental performance. Green Premium promises compliance with the latest regulations, transparency on environmental impacts, as well as circular and low-CO<sub>2</sub> products.

**Guide to assessing product sustainability** is a white paper that clarifies global eco-label standards and how to interpret environmental declarations.

[Learn more about Green Premium >](#)

[Guide to assess a product's sustainability >](#)



Transparency   RoHS/REACH

## Well-being performance

✓ Mercury Free

✓ Rohs Exemption Information   [Yes](#)

## Certifications & Standards

Reach Regulation	<a href="#">REACH Declaration</a>
Eu Rohs Directive	Compliant with Exemptions
China Rohs Regulation	<a href="#">China RoHS declaration</a> Product out of China RoHS scope. Substance declaration for your information
Environmental Disclosure	<a href="#">Product Environmental Profile</a>
Circularity Profile	No need of specific recycling operations