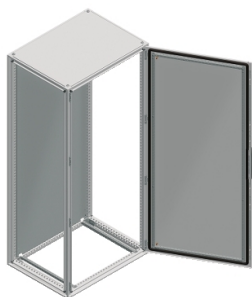


Product data sheet

Specifications



Spacial SF enclosure without mounting plate - assembled - 1800x400x400 mm

NSYSF18440

 To be discontinued on: Sep 30, 2024

 To be discontinued

Main

Range	Spacial
Extended Range	Spacial SF
Application	Multi-purpose
Product Or Component Type	Suitable enclosure
Enclosure Nominal Height	1800 mm
Enclosure Nominal Width	400 mm
Enclosure Nominal Depth	400 mm
Enclosure Mounting	Floor-standing
Device Composition	1 structure 1 rear panel 1 roof 1 locking system with handle: door 1 door

Complementary

Structure Type	Panels and doors built into the structure Formed from a single section Vertical uprights joined with top and bottom frames Perforated structure with a pitch of 25 mm
Door Opening Side	Reversible (120 °)
Door Type	Plain front
Mounting Plate Description	Without mounting plate
Type Of Gland Plate	Without gland plate
Lock Type	4 points lock, handle with 5 mm double bar insert front door
Number Of Doors	Front: 1 door(s)
Accessibility For Operation	Rear Front Sides of enclosure
Removable Parts	Door by screws hinge Rear panel by screws Roof by screws Mounting plate bracket by screws Sliding rail by screws
Material	Frame: galvanised steel Uprights: galvanised steel Door: sheet steel Panels: sheet steel Hinge: zamak Handle: polyamide 6 with 30 % fibre glass

Disclaimer: This documentation is not intended as a substitute for and is not to be used for determining suitability or reliability of these products for specific user applications

Surface Finish	Epoxy-polyester powder
Colour	Enclosure: grey (RAL 7035) Handle: black (RAL 9005)
Net Weight	76.32 kg

Environment

Standards	IEC 62208
Nema Degree Of Protection	NEMA 3R/12
Ip Degree Of Protection	IP55 conforming to IEC 60529
Ik Degree Of Protection	IK10 conforming to IEC 62262

Packing Units

Unit Type Of Package 1	PCE
Number Of Units In Package 1	1
Package 1 Height	45.0 cm
Package 1 Width	49.0 cm
Package 1 Length	213.0 cm
Package 1 Weight	62.0 kg
Unit Type Of Package 2	PAL
Number Of Units In Package 2	2
Package 2 Height	193.0 cm
Package 2 Width	45.0 cm
Package 2 Length	98.0 cm
Package 2 Weight	124.0 kg

Contractual warranty

Warranty	18 months
----------	-----------

Sustainability

Green Premium™ label is Schneider Electric's commitment to delivering products with best-in-class environmental performance. Green Premium promises compliance with the latest regulations, transparency on environmental impacts, as well as circular and low-CO₂ products.

Guide to assessing product sustainability is a white paper that clarifies global eco-label standards and how to interpret environmental declarations.

[Learn more about Green Premium >](#)

[Guide to assess a product's sustainability >](#)



Transparency RoHS/REACH

Well-being performance

✓ Mercury Free

✓ Rohs Exemption Information [Yes](#)

Certifications & Standards

Reach Regulation	REACH Declaration
Eu Rohs Directive	Pro-active compliance (Product out of EU RoHS legal scope)
China Rohs Regulation	China RoHS declaration Product out of China RoHS scope. Substance declaration for your information
Environmental Disclosure	Product Environmental Profile
Circularity Profile	No need of specific recycling operations