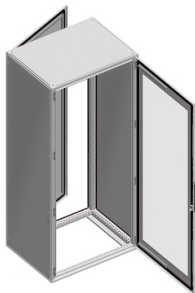


# Product data sheet

Specifications



## Spacial SF electronic enclosure - assembled - 1200x800x800 mm

NSYSF12880E

### Main

Range	Spacial
Extended Range	Spacial SF-E
Application	Electronic application
Product Or Component Type	Suitable enclosure
Enclosure Nominal Height	1200 mm
Enclosure Nominal Width	800 mm
Enclosure Nominal Depth	800 mm
Enclosure Mounting	Floor-standing
Device Composition	1 structure 1 locking system with handle: door 1 roof 2 door: front and rear 2 side panels

### Complementary

Structure Type	Vertical uprights joined with top and bottom frames Formed from a single section Panels and doors built into the structure Perforated structure with a pitch of 25 mm
Door Opening Side	Reversible (120 °)
Door Type	Glazed front Plain rear
Mounting Plate Description	Without mounting plate
Type Of Gland Plate	Without gland plate
Lock Type	4 points lock, handle with 5 mm double bar insert front and rear doors
Number Of Doors	Front and rear: 2 door(s)
Accessibility For Operation	Rear Sides of enclosure Front
Removable Parts	Door by screws hinge Roof by screws Side panel by screws
Material	Frame: galvanised steel Uprights: galvanised steel Door: sheet steel Panels: sheet steel Hinge: zamak Handle: polyamide 6 with 30 % fibre glass
Surface Finish	Epoxy-polyester powder

Disclaimer: This documentation is not intended as a substitute for and is not to be used for determining suitability or reliability of these products for specific user applications

Colour	Enclosure: grey (RAL 7035) Handle: black (RAL 9005)
--------	--

## Environment

Standards	IEC 62208
Nema Degree Of Protection	NEMA 3R/12
Ip Degree Of Protection	IP55 conforming to IEC 60529
Ik Degree Of Protection	IK08 conforming to IEC 62262 (of transparent door) IK10 conforming to IEC 62262 (of plain door)

## Packing Units

Unit Type Of Package 1	PCE
Number Of Units In Package 1	1
Package 1 Height	84.5 cm
Package 1 Width	89.0 cm
Package 1 Length	133.0 cm
Package 1 Weight	94.5 kg

## Contractual warranty

Warranty	18 months
----------	-----------

## Sustainability

**Green Premium™ label** is Schneider Electric's commitment to delivering products with best-in-class environmental performance. Green Premium promises compliance with the latest regulations, transparency on environmental impacts, as well as circular and low-CO<sub>2</sub> products.

**Guide to assessing product sustainability** is a white paper that clarifies global eco-label standards and how to interpret environmental declarations.

[Learn more about Green Premium >](#)

[Guide to assess a product's sustainability >](#)



Transparency   RoHS/REACH

## Well-being performance

✓ Mercury Free

✓ Rohs Exemption Information   [Yes](#)

## Certifications & Standards

Reach Regulation	<a href="#">REACH Declaration</a>
Eu Rohs Directive	Pro-active compliance (Product out of EU RoHS legal scope)
China Rohs Regulation	<a href="#">China RoHS declaration</a> Product out of China RoHS scope. Substance declaration for your information
Environmental Disclosure	<a href="#">Product Environmental Profile</a>
Circularity Profile	No need of specific recycling operations