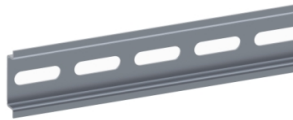


# Product data sheet

Specifications



One symmetric mounting rail  
perforated 35x7.2 mm L2000 mm  
type B, Order by Multiples of 10  
units

NSYSDR200BD

## Main

Anwendung	Multi-purpose
Range	Spacial
Product Or Component Type	Rail
Device Short Name	TR
Accessory / Separate Part Category	Mounting accessory
Type Of Rail	Symmetrical DIN
Enclosure Nominal Dimensions	-
Range Compatibility	Spacial Thalassa
Device Composition	1 rail
Quantity Per Set	Set of 10

## Complementary

Material	Galvanised steel
Surface Finish	Perforated
Fixing Mode	By fixing element - structure of enclosure location
Adjustment	Pitch 25 mm Continuous adjustment
Length	2000 mm
Height	7.2 mm nominal:
Width	35 mm nominal:
Thickness	1 mm

## Packing Units

Unit Type Of Package 1	PCE
Number Of Units In Package 1	1
Package 1 Height	1.500 cm
Package 1 Width	3.000 cm
Package 1 Length	200.000 cm
Package 1 Weight	596.000 g
Unit Type Of Package 2	BB1
Number Of Units In Package 2	10

Disclaimer: This documentation is not intended as a substitute for and is not to be used for determining suitability or reliability of these products for specific user applications

Package 2 Height	4.000 cm
Package 2 Width	4.000 cm
Package 2 Length	200.000 cm
Package 2 Weight	6.684 kg
Unit Type Of Package 3	P2M
Number Of Units In Package 3	400
Package 3 Height	90.000 cm
Package 3 Width	200.000 cm
Package 3 Length	120.000 cm
Package 3 Weight	253.400 kg

## Contractual warranty

Warranty	18 months
----------	-----------

## Sustainability

**Green Premium™ label** is Schneider Electric's commitment to delivering products with best-in-class environmental performance. Green Premium promises compliance with the latest regulations, transparency on environmental impacts, as well as circular and low-CO<sub>2</sub> products.

**Guide to assessing product sustainability** is a white paper that clarifies global eco-label standards and how to interpret environmental declarations.

[Learn more about Green Premium >](#)

[Guide to assess a product's sustainability >](#)



Transparency   RoHS/REACH

## Well-being performance

✓ Reach Free Of Svhc

✓ Toxic Heavy Metal Free

✓ Mercury Free

✓ Rohs Exemption Information   Yes

## Certifications & Standards

Reach Regulation	<a href="#">REACH Declaration</a>
Eu Rohs Directive	Pro-active compliance (Product out of EU RoHS legal scope) <a href="#">EU RoHS Declaration</a>
China Rohs Regulation	<a href="#">China RoHS declaration</a> Pro-active China RoHS declaration (out of China RoHS legal scope)
Environmental Disclosure	<a href="#">Product Environmental Profile</a>
Circularity Profile	No need of specific recycling operations