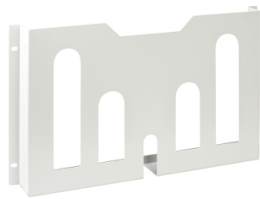


# Product data sheet

Specifications



## Document pocket, PanelSeT SFN, Spacial SF, steel, W800mm

NSYSDP8M

### Main

Range	Spacial
Product Or Component Type	Document pocket
Application	Door accessories
Nominal Dimensions Of The Housing	-
Mounting Location	On door reinforcement frame
Mounting Support	Direct mounting
Range Compatibility	Spacial SF, SM, SFX and SMX enclosures
Device Composition	1 x metal document pocket 1 x fixing element
Quantity Per Set	Set of 1

### Complementary

Material	Door: steel
Colour	Door: grey (RAL 7035)
Surface Finish	Painted
Fixing Mode	Direct fixing - door location
Adjustment	Adjustable in height, steps of 25 mm for door
Height	282 mm nominal:
Width	800 mm nominal:
Depth	65 mm

### Packing Units

Unit Type Of Package 1	PCE
Number Of Units In Package 1	1
Package 1 Height	6.5 cm
Package 1 Width	28.3 cm
Package 1 Length	67.2 cm
Package 1 Weight	2.12 kg
Unit Type Of Package 2	PAM
Number Of Units In Package 2	60
Package 2 Height	120 cm
Package 2 Width	100 cm

Disclaimer: This documentation is not intended as a substitute for and is not to be used for determining suitability or reliability of these products for specific user applications

Package 2 Length	110 cm
Package 2 Weight	143 kg

## Contractual warranty

Warranty	18 months
----------	-----------

## Sustainability

**Green Premium™ label** is Schneider Electric's commitment to delivering products with best-in-class environmental performance. Green Premium promises compliance with the latest regulations, transparency on environmental impacts, as well as circular and low-CO<sub>2</sub> products.

**Guide to assessing product sustainability** is a white paper that clarifies global eco-label standards and how to interpret environmental declarations.

[Learn more about Green Premium >](#)

[Guide to assess a product's sustainability >](#)



Transparency   RoHS/REACH

## Well-being performance

✓ Mercury Free

✓ Rohs Exemption Information   [Yes](#)

## Certifications & Standards

Reach Regulation	<a href="#">REACH Declaration</a>
Eu Rohs Directive	Pro-active compliance (Product out of EU RoHS legal scope)
China Rohs Regulation	<a href="#">China RoHS declaration</a> Product out of China RoHS scope. Substance declaration for your information
Environmental Disclosure	<a href="#">Product Environmental Profile</a>
Circularity Profile	No need of specific recycling operations