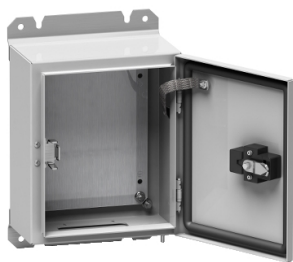


Product data sheet

Specifications



Spacial S3D nuclear plain door with mount.plate - H300xW250xD150 - IP65 - IK10

NSYS3D32515PK3

⚠ Discontinued on: Nov 2, 2023

⚠ Discontinued

Main

Range	Spacial
Product Name	S3D 6G K3
Enclosure Application	Nuclear Seismic
Product Or Component Type	Enclosure
Enclosure Nominal Height	300 mm
Enclosure Nominal Width	250 mm
Enclosure Nominal Depth	150 mm
Door Type	Plain
Mounting Plate Description	Reinforce
Enclosure Mounting	Wall mounted
Device Composition	1 x body 1 x door 1 x lock 2 x fixing bracket 1 x mounting plate 1 x earthing components door and lock 2 x face to face stud inside outside 1 x cable gland plate
Continuity Of Earth	Earthing connection between body and door

Complementary

Body Type	Gutter-shaped front rail Single piece body
Number Of Doors	Front face: 1 door(s)
Door Opening Side	Right (120 °)
Lock Type	1-point closure
Type Of Keylock	EDF 1600
Type Of Operating Handle	Lock button
Accessibility For Operation	Front
Removable Parts	Cable gland plate by screws
Material	Steel
Thickness	Body: 2 mm Door: 2 mm Cable gland plate: 1.5 mm
Surface Finish	Epoxy-polyester powder

Disclaimer: This documentation is not intended as a substitute for and is not to be used for determining suitability or reliability of these products for specific user applications

Colour	Grey (RAL 7035)
--------	-----------------

Environment

Surface Treatment	decontaminable painting 0.06 mm series PID 100 conforming to CCTR 90.C.031.06.
Standards	S3D 6G K3 manufactured process answers to the K3 requirements according to the RCCE 2012 CCTR 90.C.031.06 IEC 62208 EDF CRT 91 C 112 00
Ip Degree Of Protection	IP65 conforming to IEC 60529
Ik Degree Of Protection	IK10 conforming to IEC 62262
Seismic Performance	Seismic tests 6G conforming to EDF CRT 91 C 112 00

Packing Units

Unit Type Of Package 1	PCE
Number Of Units In Package 1	1
Package 1 Height	39.0 cm
Package 1 Width	21.0 cm
Package 1 Length	28.0 cm
Package 1 Weight	9.0 kg

Sustainability

Green Premium™ label is Schneider Electric's commitment to delivering products with best-in-class environmental performance. Green Premium promises compliance with the latest regulations, transparency on environmental impacts, as well as circular and low-CO₂ products.

Guide to assessing product sustainability is a white paper that clarifies global eco-label standards and how to interpret environmental declarations.

[Learn more about Green Premium >](#)

[Guide to assess a product's sustainability >](#)



Transparency RoHS/REACH

Well-being performance

✓ Mercury Free

✓ Rohs Exemption Information [Yes](#)

Certifications & Standards

Reach Regulation	REACH Declaration
Eu Rohs Directive	Pro-active compliance (Product out of EU RoHS legal scope)
China Rohs Regulation	China RoHS declaration Product out of China RoHS scope. Substance declaration for your information
Environmental Disclosure	Product Environmental Profile
Circularity Profile	No need of specific recycling operations