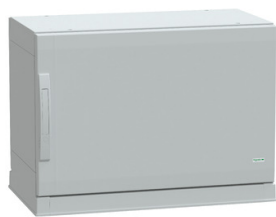


Product data sheet

Specifications



Floor standing polyester enclosure,
Thalassa PLA, plain door, open
bottom, 500x750x420mm, IP54,
IK10

NSYPLAZ574G

Main

Range	Thalassa
Product Name	Thalassa PLA
Enclosure Type	Multi-purpose
Product Or Component Type	Suitable enclosure
Version	PLAZ
Nominal Height	500 mm
Nominal Width	750 mm
Nominal Depth	420 mm
Enclosure Mounting	Floor-standing
Device Composition	1 top part 1 bottom part 2 side part 1 rear panel 1 door 1 plinth

Complementary

Body Type	Sealed top and open bottom part assembled with side parts
Door Type	Plain front
Number Of Doors	1 door(s)
Door Opening Side	Reversible (120 °)
Lock Type	2 points handle lock, 5 mm double-bar
Accessibility For Operation	Rear Bottom Front
Removable Parts	Door by hinges Rear panel by fixing element
Material	Polyester reinforced with fibreglass
Colour	Grey (RAL 7035)
Standards	IEC 62208
Product Certifications	Veritas
Electrical Insulation Class	Class II

Environment

Ip Degree Of Protection	IP54 conforming to IEC 60529 (plinth type open bottom)
-------------------------	--

Disclaimer: This documentation is not intended as a substitute for and is not to be used for determining suitability or reliability of these products for specific user applications

Ik Degree Of Protection	IK10 conforming to IEC 62262 (plain door)
Fire Resistance	960 °C conforming to IEC 62208
Ambient Air Temperature For Storage	-35...90 °C

Packing Units

Unit Type Of Package 1	PCE
Number Of Units In Package 1	1
Package 1 Height	56.5 cm
Package 1 Width	78 cm
Package 1 Length	45 cm
Package 1 Weight	25.82 kg
Unit Type Of Package 2	PAM
Number Of Units In Package 2	6
Package 2 Height	120 cm
Package 2 Width	100 cm
Package 2 Length	129 cm
Package 2 Weight	143 kg

Sustainability

Green Premium™ label is Schneider Electric's commitment to delivering products with best-in-class environmental performance. Green Premium promises compliance with the latest regulations, transparency on environmental impacts, as well as circular and low-CO₂ products.

Guide to assessing product sustainability is a white paper that clarifies global eco-label standards and how to interpret environmental declarations.

[Learn more about Green Premium >](#)

[Guide to assess a product's sustainability >](#)



Transparency RoHS/REACH

Well-being performance



Mercury Free



RoHS Exemption Information

Yes

Certifications & Standards

Reach Regulation

[REACH Declaration](#)

Eu RoHS Directive

Pro-active compliance (Product out of EU RoHS legal scope)

China RoHS Regulation

[China RoHS declaration](#)

Product out of China RoHS scope. Substance declaration for your information

Environmental Disclosure

[Product Environmental Profile](#)

Circularity Profile

No need of specific recycling operations