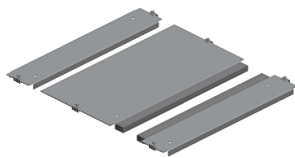


# Product data sheet

Specifications



One entry cable gland plate,  
PanelSeT SFN, Spacial SF, for  
electrical enclosure W800 D600mm,  
fixed by clips

NSYEC861

## Main

Range	Spacial
Product Or Component Type	Cable gland plate
Accessory / Separate Part Category	Cable management accessory
Application	Electronic application Multi-purpose
Range Compatibility	Spacial Spacial SF Spacial Spacial SFM
Mounting Location	Enclosure bottom
Cable Gland Type	Standard
Cable Entry	1 entry
Device Composition	fixing elements 1 plate self extinguishing polyurethane adhesive gasket with cross-section of 15 x 25 mm
Quantity Per Set	Set of 1
Material	Galvanised steel

## Complementary

Height	30 mm
Width	800 mm nominal: 616 mm useful:
Depth	600 mm nominal: 650 mm real:
Thickness	1.5 mm

## Packing Units

Unit Type Of Package 1	PCE
Number Of Units In Package 1	1
Package 1 Height	2.54 cm
Package 1 Width	34.29 cm
Package 1 Length	64.77 cm
Package 1 Weight	4.618 kg
Unit Type Of Package 2	P12
Number Of Units In Package 2	30
Package 2 Height	45 cm

Disclaimer: This documentation is not intended as a substitute for and is not to be used for determining suitability or reliability of these products for specific user applications

Package 2 Width	80 cm
Package 2 Length	120 cm
Package 2 Weight	138.6 kg

## Contractual warranty

Warranty	18 months
----------	-----------

## Sustainability

**Green Premium™ label** is Schneider Electric's commitment to delivering products with best-in-class environmental performance. Green Premium promises compliance with the latest regulations, transparency on environmental impacts, as well as circular and low-CO<sub>2</sub> products.

**Guide to assessing product sustainability** is a white paper that clarifies global eco-label standards and how to interpret environmental declarations.

[Learn more about Green Premium >](#)

[Guide to assess a product's sustainability >](#)



Transparency   RoHS/REACH

## Well-being performance

✓ Mercury Free

✓ Rohs Exemption Information   [Yes](#)

## Certifications & Standards

Reach Regulation	<a href="#">REACH Declaration</a>
Eu Rohs Directive	Pro-active compliance (Product out of EU RoHS legal scope)
China Rohs Regulation	<a href="#">China RoHS declaration</a> Product out of China RoHS scope. Substance declaration for your information
Environmental Disclosure	<a href="#">Product Environmental Profile</a>
Circularity Profile	No need of specific recycling operations