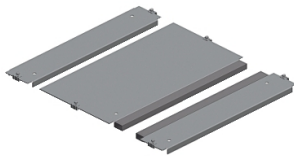


Product data sheet

Specifications



Spacial SF 1 entry cable gland plate - fixed by clips - 800x1200 mm

NSYEC8121

⚠ Discontinued on: Sep 30, 2023

⚠ Discontinued

Main

Range	Spacial
Product Or Component Type	Cable gland plate
Accessory / Separate Part Category	Cable management accessory
Range Compatibility	Spacial Spacial SF
Mounting Location	Enclosure bottom
Cable Gland Type	Standard
Cable Entry	1 entry
Device Composition	fixing elements 1 plate self extinguishing polyurethane adhesive gasket with cross-section of 15 x 25 mm
Quantity Per Set	Set of 1
Material	Galvanised steel

Complementary

Height	30 mm
Width	800 mm nominal: 616 mm useful: 530 mm real:
Depth	1200 mm nominal:
Thickness	1.5 mm

Packing Units

Unit Type Of Package 1	PCE
Number Of Units In Package 1	1
Package 1 Height	3.0 cm
Package 1 Width	66.0 cm
Package 1 Length	53.0 cm
Package 1 Weight	9.706 kg

Contractual warranty

Warranty	18 months
----------	-----------

Disclaimer: This documentation is not intended as a substitute for and is not to be used for determining suitability or reliability of these products for specific user applications

Sustainability

Green Premium™ label is Schneider Electric’s commitment to delivering products with best-in-class environmental performance. Green Premium promises compliance with the latest regulations, transparency on environmental impacts, as well as circular and low-CO₂ products.

Guide to assessing product sustainability is a white paper that clarifies global eco-label standards and how to interpret environmental declarations.

[Learn more about Green Premium >](#)

[Guide to assess a product’s sustainability >](#)

Well-being performance



Mercury Free



Rohs Exemption Information

Yes

Reach Regulation

[REACH Declaration](#)

Eu Rohs Directive

Pro-active compliance (Product out of EU RoHS legal scope)

China Rohs Regulation

[China RoHS declaration](#)

Product out of China RoHS scope. Substance declaration for your information