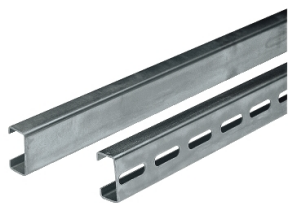


Product data sheet

Specifications



Symmetric C-shaped rails drilled
21x11x10. Length 2000mm. Supply:
20 rails 2m.

NSYCNT20

Main

| | |
|------------------------------------|----------------------|
| Anwendung | Multi-purpose |
| Range | Spacial |
| Product Or Component Type | Rail |
| Accessory / Separate Part Category | Mounting accessory |
| Type Of Rail | Symmetrical C-shaped |
| Enclosure Nominal Dimensions | - |
| Range Compatibility | Spacial Thalassa |
| Device Composition | 1 rail |
| Quantity Per Set | Set of 10 |

Complementary

| | |
|----------------|-------------------|
| Material | Galvanised steel |
| Surface Finish | Perforated |
| Fixing Mode | By fixing element |
| Length | 2000 mm |
| Height | 21 mm |
| Width | 11 mm |
| Thickness | 1.5 mm |

Packing Units

| | |
|------------------------------|----------|
| Unit Type Of Package 1 | PCE |
| Number Of Units In Package 1 | 1 |
| Package 1 Height | 1.1 cm |
| Package 1 Width | 2.1 cm |
| Package 1 Length | 200.0 cm |
| Package 1 Weight | 925.0 g |
| Unit Type Of Package 2 | CAR |
| Number Of Units In Package 2 | 20 |
| Package 2 Height | 6.0 cm |
| Package 2 Width | 7.0 cm |
| Package 2 Length | 200.0 cm |

Disclaimer: This documentation is not intended as a substitute for and is not to be used for determining suitability or reliability of these products for specific user applications

| | |
|------------------|---------|
| Package 2 Weight | 18.5 kg |
|------------------|---------|

Contractual warranty

| | |
|----------|-----------|
| Warranty | 18 months |
|----------|-----------|

Sustainability

Green Premium™ label is Schneider Electric's commitment to delivering products with best-in-class environmental performance. Green Premium promises compliance with the latest regulations, transparency on environmental impacts, as well as circular and low-CO₂ products.

Guide to assessing product sustainability is a white paper that clarifies global eco-label standards and how to interpret environmental declarations.

[Learn more about Green Premium >](#)

[Guide to assess a product's sustainability >](#)



Transparency RoHS/REACH

Well-being performance

| | | |
|---|----------------------------|-----|
| ✓ | Reach Free Of Svhc | |
| ✓ | Toxic Heavy Metal Free | |
| ✓ | Mercury Free | |
| ✓ | Rohs Exemption Information | Yes |

Certifications & Standards

| | |
|--------------------------|---|
| Reach Regulation | REACH Declaration |
| Eu Rohs Directive | Pro-active compliance (Product out of EU RoHS legal scope) EU RoHS Declaration |
| China Rohs Regulation | China RoHS declaration Pro-active China RoHS declaration (out of China RoHS legal scope) |
| Environmental Disclosure | Product Environmental Profile |
| Circularity Profile | No need of specific recycling operations |