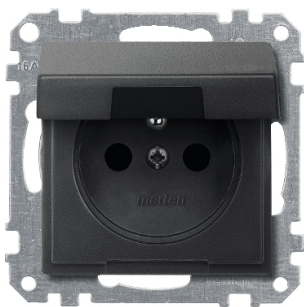


Product data sheet

Specifications



Socket-outlet insert with earthing pin and hinged lid, anthracite, System M

MTN287414

⚠ Discontinued on: Jan 30, 2013

⚠ Discontinued

Main

Aesthetic Name	M-Smart M-Plan System M M-Arc M-Plan glass M-Star M-Elegance
Product Or Component Type	Socket-outlet
Device Presentation	Mechanism with central plate
Outlet Standard	French
Socket Additional Information	With hinged lid Shuttered

Complementary

Outlet Poles Configuration	2P + E
Wiring Device Mounting	Flush
Fixing Mode	By screws and claws
Rated Current	16 A
[Ue] Rated Operational Voltage	250 V
Colour Tint	Anthracite (RAL 7024)
Connections - Terminals	Screw terminal
Material	Polycarbonate matt

Environment

Ip Degree Of Protection	IP20
-------------------------	------

Packing Units

Unit Type Of Package 1	PCE
Number Of Units In Package 1	1
Package 1 Height	4.66 cm
Package 1 Width	7.25 cm
Package 1 Length	7.25 cm
Package 1 Weight	0.083 kg

Contractual warranty

Disclaimer: This documentation is not intended as a substitute for and is not to be used for determining suitability or reliability of these products for specific user applications

Warranty

18 months