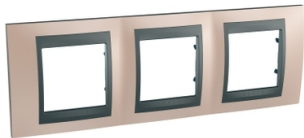


# Product data sheet

Specifications



## Unica Top - cover frame - 3 gangs, H71 - onyx copper/graphite

MGU66.006.296

 **Discontinued on:** Sep 30, 2023

 **Discontinued**

### Main

Range	Unica
Device Application	Mounting
Product Or Component Type	Cover frame
Aesthetic Name	Unica Top
Number Of Gangs	3 gangs horizontal
Fixing Mode	Clip-in
Cover Frame Colour Tint	Onyx copper
Decoration Colour	Graphite

### Complementary

Material	ASA + PC: decorative frame ASA + PC: intermediate part Zamak: cover frame
Standards	UNE 20315 EN 60669-1
Height	80 mm
Width	232 mm
Depth	14 mm
Distance Between Centers	71 mm
Net Weight	0.118 kg
Market Segment	Residential Small commercial

### Environment

Ik Degree Of Protection	IK01
Ip Degree Of Protection	IP20
Environmental Characteristic	Alcohol Petrol UV resistant Bleach Window-cleaning fluid Acetone Oil Liquid soap

### Packing Units

Disclaimer: This documentation is not intended as a substitute for and is not to be used for determining suitability or reliability of these products for specific user applications

Unit Type Of Package 1	PCE
Number Of Units In Package 1	1
Package 1 Height	1.500 cm
Package 1 Width	8.000 cm
Package 1 Length	23.000 cm
Package 1 Weight	123.700 g
Unit Type Of Package 2	BB1
Number Of Units In Package 2	3
Package 2 Height	5.500 cm
Package 2 Width	11.000 cm
Package 2 Length	24.500 cm
Package 2 Weight	425.000 g
Unit Type Of Package 3	S02
Number Of Units In Package 3	18
Package 3 Height	15.000 cm
Package 3 Width	30.000 cm
Package 3 Length	40.000 cm
Package 3 Weight	2.783 kg

## Contractual warranty

Warranty	18 months
----------	-----------

# Sustainability

**Green Premium™ label** is Schneider Electric’s commitment to delivering products with best-in-class environmental performance. Green Premium promises compliance with the latest regulations, transparency on environmental impacts, as well as circular and low-CO<sub>2</sub> products.

**Guide to assessing product sustainability** is a white paper that clarifies global eco-label standards and how to interpret environmental declarations.

[Learn more about Green Premium >](#)

[Guide to assess a product’s sustainability >](#)



Transparency   RoHS/REACH

## Well-being performance

✓ Mercury Free

✓ Rohs Exemption Information   [Yes](#)

## Certifications & Standards

Reach Regulation	<a href="#">REACH Declaration</a>
Eu Rohs Directive	Pro-active compliance (Product out of EU RoHS legal scope)
China Rohs Regulation	<a href="#">China RoHS declaration</a> Product out of China RoHS scope. Substance declaration for your information
Environmental Disclosure	<a href="#">Product Environmental Profile</a>
Circularity Profile	No need of specific recycling operations