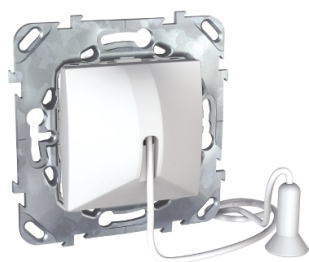


Product data sheet

Specifications



Unica - pull string switch - 10A 250V AC - 2 m - white

MGU5.226.18ZD

⚠ Discontinued on: Dec 30, 2021

⚠ End-of-service on: Feb 2, 2022

⚠ Discontinued

Main

Range	Unica
Product Or Component Type	Pull string switch
Aesthetic Name	Unica (standard aesthetic)
Device Presentation	Mechanism with fixing frame
Device Application	Control
Switch Function	1-pole 1-way
Rated Current	10 A
Actuator	Cord push-button
Number Of Modules	2 modules
Fixing Mode	Screws
Colour Tint	White (RAL 9003)

Complementary

Technology Type	Electromechanical
Cable Length	1 m
[Ue] Rated Operational Voltage	250 V
Network Type	AC
Network Frequency	50/60 Hz
Opening Distance	> 3 mm
Connections - Terminals	Screwless terminals
Cable Cross Section	2.5 mm² flexible cable 2.5 mm² rigid cable
Minimum Load Breaking Capacity	200 operations 1.25 In and 1.1 Un, cos phi = 0.3
Electrical Durability	40000 cycles, cos phi = 0.6
Dielectric Strength	2000 V
Insulation Resistance	> 5 MOhm at 500 V
Material	ASA + PC: mechanism cover Zamak: fixing frame
Standards	EN 60669-1 EMC directive LV directive
Product Certifications	FR.ME63.B02736

Disclaimer: This documentation is not intended as a substitute for and is not to be used for determining suitability or reliability of these products for specific user applications

Ambient Air Temperature For Operation	25...35 °C
Ambient Air Temperature For Storage	0...50 °C
Embedding Depth	22 mm
Depth	34 mm
Width	70.9 mm
Height	70.9 mm
Net Weight	0.0636 kg
Surface Treatment	Untreated
Surface Finish	Matt

Environment

Ik Degree Of Protection	IK01
Ip Degree Of Protection	IP20
Environmental Characteristic	Alcohol Window-cleaning fluid Acetone Oil Petrol Bleach UV resistant Liquid soap

Packing Units

Unit Type Of Package 1	PCE
Number Of Units In Package 1	1
Package 1 Height	4.4 cm
Package 1 Width	7.5 cm
Package 1 Length	7.5 cm
Package 1 Weight	63 g

Contractual warranty

Warranty	18 months
----------	-----------

Sustainability

Green Premium™ label is Schneider Electric's commitment to delivering products with best-in-class environmental performance. Green Premium promises compliance with the latest regulations, transparency on environmental impacts, as well as circular and low-CO₂ products.

Guide to assessing product sustainability is a white paper that clarifies global eco-label standards and how to interpret environmental declarations.

[Learn more about Green Premium >](#)

[Guide to assess a product's sustainability >](#)



Transparency RoHS/REACH

Well-being performance

✓ Reach Free Of Svhc

✓ Toxic Heavy Metal Free

✓ Mercury Free

✓ Rohs Exemption Information Yes

Certifications & Standards

Reach Regulation	REACH Declaration
Eu Rohs Directive	Compliant EU RoHS Declaration
China Rohs Regulation	China RoHS declaration Pro-active China RoHS declaration (out of China RoHS legal scope)
Environmental Disclosure	Product Environmental Profile
Weee	The product must be disposed on European Union markets following specific waste collection and never end up in rubbish bins
Circularity Profile	No need of specific recycling operations