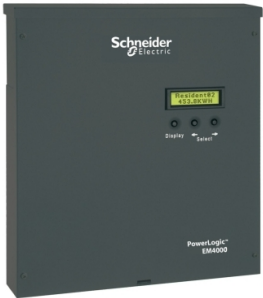


Product data sheet

Specifications



CT Shorting Module for EM4000 series meter

METSECTSHORT

Main

Range	PowerLogic
Product Or Component Type	CT shorting module

Complementary

Height	16.5 mm
--------	---------

Packing Units

Unit Type Of Package 1	PCE
Number Of Units In Package 1	1
Package 1 Height	10.4 cm
Package 1 Width	9.5 cm
Package 1 Length	10 cm
Package 1 Weight	1.588 kg

Disclaimer: This documentation is not intended as a substitute for and is not to be used for determining suitability or reliability of these products for specific user applications

Sustainability

Green Premium™ label is Schneider Electric’s commitment to delivering products with best-in-class environmental performance. Green Premium promises compliance with the latest regulations, transparency on environmental impacts, as well as circular and low-CO₂ products.

Guide to assessing product sustainability is a white paper that clarifies global eco-label standards and how to interpret environmental declarations.

[Learn more about Green Premium >](#)

[Guide to assess a product’s sustainability >](#)

Eu Rohs Directive	Compliant EU RoHS Declaration
Weee	The product must be disposed on European Union markets following specific waste collection and never end up in rubbish bins
California Proposition 65	WARNING: Cancer and Reproductive Harm - www.P65Warnings.ca.gov