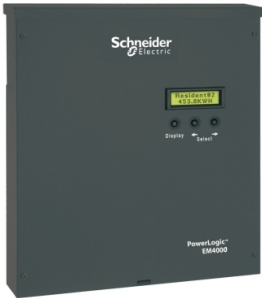


Product data sheet

Specifications



CT, solid core, 600A / 80mA secondary, for EM4000 series multi-circuit meter

METSECT80600

Main

Range	PowerLogic
Product Name	CT
Product Or Component Type	Current transformer
Secondary Current	80 mA
[In] Rated Current	600 A

Complementary

Current Transformer Type	Standard for cable
Current Transformer Ratio	600 A/80 mA
[Ui] Rated Insulation Voltage	600 V
Depth	11.5 mm
Diameter	32.5 mm inner: 57.3 mm outer:
Net Weight	1.36 kg
[Uimp] Rated Impulse Withstand Voltage	10 kV

Environment

Product Certifications	CE
------------------------	----

Packing Units

Unit Type Of Package 1	PCE
Number Of Units In Package 1	1
Package 1 Height	8.5 cm
Package 1 Width	9.0 cm
Package 1 Length	11.5 cm
Package 1 Weight	1.588 kg

Disclaimer: This documentation is not intended as a substitute for and is not to be used for determining suitability or reliability of these products for specific user applications

Sustainability

Green Premium™ label is Schneider Electric’s commitment to delivering products with best-in-class environmental performance. Green Premium promises compliance with the latest regulations, transparency on environmental impacts, as well as circular and low-CO₂ products.

Guide to assessing product sustainability is a white paper that clarifies global eco-label standards and how to interpret environmental declarations.

[Learn more about Green Premium >](#)

[Guide to assess a product’s sustainability >](#)

Eu Rohs Directive	Under investigation
Weee	The product must be disposed on European Union markets following specific waste collection and never end up in rubbish bins
California Proposition 65	WARNING: This product can expose you to chemicals including: Lead and lead compounds, which is known to the State of California to cause cancer and birth defects or other reproductive harm. For more information go to www.P65Warnings.ca.gov