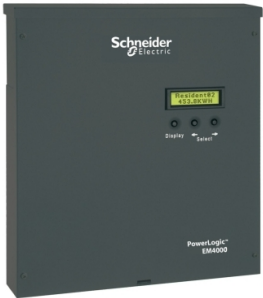


# Product data sheet

Specifications



CT, solid core, 400A / 80mA  
secondary, for EM4000 series multi-  
circuit meter

METSECT80400

## Main

Range	PowerLogic
Product Name	CT
Product Or Component Type	Current transformer
Secondary Current	80 mA
[In] Rated Current	400 A

## Complementary

Current Transformer Type	Standard for cable
Current Transformer Ratio	400 A/80 mA
[Ui] Rated Insulation Voltage	600 V
Depth	11.2 mm
Diameter	25 mm inner: 47.1 mm outer:
Net Weight	1.36 kg
[Uimp] Rated Impulse Withstand Voltage	10 kV

## Environment

Product Certifications	CE
------------------------	----

## Packing Units

Unit Type Of Package 1	PCE
Number Of Units In Package 1	1
Package 1 Height	8.5 cm
Package 1 Width	9.0 cm
Package 1 Length	11.5 cm
Package 1 Weight	621.422 g

Disclaimer: This documentation is not intended as a substitute for and is not to be used for determining suitability or reliability of these products for specific user applications

## Sustainability





**Green Premium™ label** is Schneider Electric's commitment to delivering products with best-in-class environmental performance. Green Premium promises compliance with the latest regulations, transparency on environmental impacts, as well as circular and low-CO<sub>2</sub> products.

**Guide to assessing product sustainability** is a white paper that clarifies global eco-label standards and how to interpret environmental declarations.

[Learn more about Green Premium >](#)

[Guide to assess a product's sustainability >](#)

## Well-being performance

	Reach Free Of Svhc	
	Toxic Heavy Metal Free	
	Mercury Free	
	Rohs Exemption Information	Yes
Reach Regulation	<a href="#">REACH Declaration</a>	
Eu Rohs Directive	Compliant <a href="#">EU RoHS Declaration</a>	
China Rohs Regulation	<a href="#">China RoHS declaration</a> Product out of China RoHS scope. Substance declaration for your information	
Weee	The product must be disposed on European Union markets following specific waste collection and never end up in rubbish bins	
California Proposition 65	WARNING: This product can expose you to chemicals including: Lead and lead compounds, which is known to the State of California to cause cancer and birth defects or other reproductive harm. For more information go to <a href="http://www.P65Warnings.ca.gov">www.P65Warnings.ca.gov</a>	