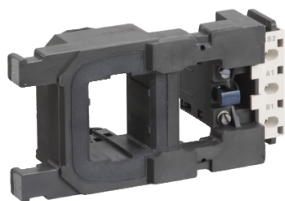


Product data sheet

Specifications



TeSys F - specific contactor coil - 42 V AC 40...400 Hz low consumption

LX9FH0422

⚠ Discontinued on: Jun 30, 2020

⚠ Discontinued

Main

| | |
|------------------------------|-----------------------------------------------------|
| Range | TeSys |
| Product Or Component Type | Specific contactor coil |
| Device Short Name | LX9FH |
| Range Compatibility | TeSys TeSys F LC1F contactor |
| Product Compatibility | LC1F265 LC1F330 |
| Control Circuit Type | AC at 40...400 Hz low consumption |
| [Uc] Control Circuit Voltage | 42 V AC 40...400 Hz |
| Average Resistance | 2.30 Ohm inrush at 20 °C 50 Ohm holding at 20 °C |
| Operating Time | 25 ms opening 45 ms closing |
| Mechanical Durability | 10 Mcycles |
| Maximum Operating Rate | 3600 cyc/h 55 °C |

Complementary

| | |
|---------------------------------|------------------------------------------------------------------------------|
| Coil Technology | Without built-in suppressor module |
| Control Circuit Voltage Limits | Operational: 0.85...1.1 Uc (at 55 °C) Drop-out: 0.35...0.55 Uc (at 55 °C) |
| Inrush Power In Va | 560...660 VA 40...400 Hz (at 20 °C) |
| Hold-In Power Consumption In Va | 8...10 VA 40...400 Hz (at 20 °C) |
| Heat Dissipation | 8.4...10.4 W |

Environment

| | |
|---------------------------------------|------------|
| Ambient Air Temperature For Operation | -5...55 °C |
| Net Weight | 0.75 kg |

Packing Units

| | |
|------------------------------|-------|
| Unit Type Of Package 1 | PCE |
| Number Of Units In Package 1 | 1 |
| Package 1 Height | 9 cm |
| Package 1 Width | 10 cm |
| Package 1 Length | 19 cm |

Disclaimer: This documentation is not intended as a substitute for and is not to be used for determining suitability or reliability of these products for specific user applications

| | |
|------------------|-------|
| Package 1 Weight | 870 g |
|------------------|-------|

Contractual warranty

| | |
|----------|-----------|
| Warranty | 18 months |
|----------|-----------|