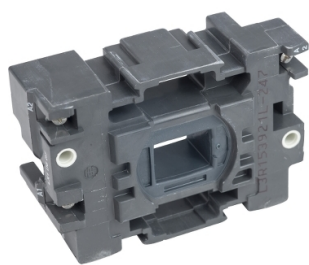


Product data sheet

Specifications



Contactor coil, TeSys Deca, LX1D6, 24V AC 50/60Hz for 80 and 95A contactor

LX1D6B7

Main

Range	TeSys
Product Or Component Type	Contactor coil
Device Short Name	LX1D6
Control Circuit Type	AC at 50/60 Hz
[Uc] Control Circuit Voltage	24 V AC 50/60 Hz
Average Resistance	1.22 Ohm at 20 °C
Inductance Of Closed Circuit	0.08 H
Product Compatibility	LC1D40 LC1D50 LC1D65...D95
Mechanical Durability	4 Mcycles
Maximum Operating Rate	3600 cyc/h 60 °C

Complementary

Coil Technology	Without built-in suppressor module
Control Circuit Voltage Limits	Drop-out: 0.3...0.6 Uc at 50/60 Hz (at <55 °C) Operational: 0.8...1.1 Uc at 50 Hz (at <55 °C) Operational: 0.85...1.1 Uc at 60 Hz (at <55 °C)
Inrush Power In Va	245 VA 60 Hz cos phi 0.75 (at 20 °C) 245 VA 50 Hz cos phi 0.75 (at 20 °C)
Hold-In Power Consumption In Va	26 VA 60 Hz cos phi 0.3 (at 20 °C) 26 VA 50 Hz cos phi 0.3 (at 20 °C)
Heat Dissipation	6...10 W at 50/60 Hz

Environment

Ambient Air Temperature For Operation	-5...60 °C
Net Weight	0.28 kg

Packing Units

Unit Type Of Package 1	PCE
Number Of Units In Package 1	1
Package 1 Height	6.000 cm
Package 1 Width	8.900 cm
Package 1 Length	12.800 cm
Package 1 Weight	313.000 g

Disclaimer: This documentation is not intended as a substitute for and is not to be used for determining suitability or reliability of these products for specific user applications

Unit Type Of Package 2	S02
Number Of Units In Package 2	16
Package 2 Height	15.000 cm
Package 2 Width	30.000 cm
Package 2 Length	40.000 cm
Package 2 Weight	5.321 kg

Contractual warranty

Warranty	18 months
----------	-----------

Sustainability

Green Premium™ label is Schneider Electric's commitment to delivering products with best-in-class environmental performance. Green Premium promises compliance with the latest regulations, transparency on environmental impacts, as well as circular and low-CO₂ products.

Guide to assessing product sustainability is a white paper that clarifies global eco-label standards and how to interpret environmental declarations.

[Learn more about Green Premium >](#)

[Guide to assess a product's sustainability >](#)



Transparency RoHS/REACH

Well-being performance

✓ Reach Free Of Svhc

✓ Mercury Free

✓ Rohs Exemption Information [Yes](#)

Certifications & Standards

Reach Regulation	REACH Declaration
Eu Rohs Directive	Pro-active compliance (Product out of EU RoHS legal scope)
China Rohs Regulation	China RoHS declaration Product out of China RoHS scope. Substance declaration for your information
Environmental Disclosure	Product Environmental Profile
Circularity Profile	No need of specific recycling operations
California Proposition 65	WARNING: This product can expose you to chemicals including: Antimony oxide & Antimony trioxide, which is known to the State of California to cause cancer. For more information go to www.P65Warnings.ca.gov