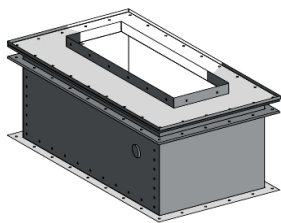


Product data sheet

Specifications



Protective cover with bellow, Canalis
KR, feed unit connection, KRA
1600/2500A, KRC 2000/3200A,
made to measure, IP55

KRB0020CR4

Main

Range	Canalis
Product Name	KR
Product Or Component Type	Protective cover
Device Short Name	KRB
Range Compatibility	Canalis KR
Accessory / Separate Part Category	Protection accessory
Material	Stainless steel 316
[Ie] Rated Operational Current	1600 A with aluminium 2000 A with aluminium 2500 A with aluminium 2000 A with copper 2500 A with copper 3200 A with copper

Packing Units

Unit Type Of Package 1	PCE
Number Of Units In Package 1	1
Package 1 Height	55.0 cm
Package 1 Width	50.0 cm
Package 1 Length	60.0 cm
Package 1 Weight	51.43 kg

Disclaimer: This documentation is not intended as a substitute for and is not to be used for determining suitability or reliability of these products for specific user applications

Sustainability

Green Premium™ label is Schneider Electric's commitment to delivering products with best-in-class environmental performance. Green Premium promises compliance with the latest regulations, transparency on environmental impacts, as well as circular and low-CO₂ products.

Guide to assessing product sustainability is a white paper that clarifies global eco-label standards and how to interpret environmental declarations.

[Learn more about Green Premium >](#)

[Guide to assess a product's sustainability >](#)



Transparency RoHS/REACH

Well-being performance

✓ Reach Free Of Svhc

✓ Mercury Free

✓ Rohs Exemption Information [Yes](#)

Certifications & Standards

Reach Regulation	REACH Declaration
Eu Rohs Directive	Compliant EU RoHS Declaration
China Rohs Regulation	China RoHS declaration Pro-active China RoHS declaration (out of China RoHS legal scope)
Environmental Disclosure	Product Environmental Profile
Weee	The product must be disposed on European Union markets following specific waste collection and never end up in rubbish bins
Circularity Profile	End of Life Information