

Product data sheet

Specifications



Cam reversing star-delta switch,
Harmony K, front mounting, plastic,
3 poles, 45° , 115A, 88x88mm front
plate,5 positions marked

K115K006YP

Main

Range Of Product	Harmony K
Product Or Component Type	Complete cam switch
Component Name	K115
[Ith] Conventional Free Air Thermal Current	115 A
Mounting Location	Front
Fixing Mode	4 holes
Cam Switch Head Type	With front plate 88 x 88 mm
Type Of Operator	Black handle
Rotary Handle Padlocking	Without
Presentation Of Legend	With metallic legend, delta - Y - 0 - Y - delta black marking
Cam Switch Function	Reversing star-delta switch
Return	Without
Off Position	With Off position
Poles Description	3P
Switching Positions	Right: 0° - 45° - 90° Left: 0° - 315° - 270°
Ip Degree Of Protection	IP40 conforming to IEC 60529

Complementary

Switching Angle	45 °
[UI] Rated Insulation Voltage	690 V (pollution degree 3) conforming to IEC 60947-1
Rated Operational Power In W	13000 W AC-3, 380/440 V 1 phase conforming to IEC 60947-3 15000 W AC-23A, 220/240 V 1 phase conforming to IEC 60947-3 15000 W AC-3, 220/240 V 3 phases conforming to IEC 60947-3 22000 W AC-23A, 380/440 V 1 phase conforming to IEC 60947-3 30000 W AC-23A, 220/240 V 3 phases conforming to IEC 60947-3 30000 W AC-3, 380/440 V 3 phases conforming to IEC 60947-3 30000 W AC-3, 660/690 V 3 phases conforming to IEC 60947-3 3700 W AC-3, 110 V 1 phase conforming to IEC 60947-3 45000 W AC-23A, 380/440 V 3 phases conforming to IEC 60947-3 5500 W AC-23A, 110 V 1 phase conforming to IEC 60947-3 65000 W AC-23A, 660/690 V 3 phases conforming to IEC 60947-3 7500 W AC-3, 220/240 V 1 phase conforming to IEC 60947-3
[Ie] Rated Operational Current Ac	100 A AC-21A
Short-Circuit Current	15000 A
Short-Circuit Protection	125 A cartridge fuse, type gG
[Uimp] Rated Impulse Withstand Voltage	6 kV conforming to IEC 60947-1

Disclaimer: This documentation is not intended as a substitute for and is not to be used for determining suitability or reliability of these products for specific user applications

Contact Operation	Slow-break
Positive Opening	With
Electrical Connection	Captive screw clamp terminals flexible, clamping capacity: 1 x 25 mm ² Captive screw clamp terminals solid, clamping capacity: 1 x 35 mm ²
Tightening Torque	2.5 N.m
Switching Capacity In Ma	100000 mA DC at 140 V 3 contact(s) for resistive load (T = 1 ms) 100000 mA DC at 24 V 1 contact(s) for inductive load (T = 50 ms) 100000 mA DC at 48 V 1 contact(s) for resistive load (T = 1 ms) 100000 mA DC at 48 V 2 contact(s) for inductive load (T = 50 ms) 100000 mA DC at 70 V 3 contact(s) for inductive load (T = 50 ms) 100000 mA DC at 95 V 2 contact(s) for resistive load (T = 1 ms) 115000 mA DC at 24 V 1 contact(s) for resistive load (T = 1 ms) 115000 mA DC at 48 V 2 contact(s) for resistive load (T = 1 ms) 115000 mA DC at 70 V 3 contact(s) for resistive load (T = 1 ms) 33000 mA DC at 30 V 1 contact(s) for inductive load (T = 50 ms) 33000 mA DC at 60 V 2 contact(s) for inductive load (T = 50 ms) 33000 mA DC at 90 V 3 contact(s) for inductive load (T = 50 ms)
Mechanical Durability	300000 cycles
Cad Overall Width	88 mm
Cad Overall Height	88 mm
Cad Overall Depth	234 mm
Net Weight	0.88 kg

Environment

Standards	IEC 60947-3
Product Certifications	CULus 120 V 5 hp 1 phase CULus 240 V 10 hp 1 phase CULus 240 V 20 hp 3 phases CULus 480 V 30 hp 3 phases
Protective Treatment	TC
Ambient Air Temperature For Operation	-25...55 °C
Ambient Air Temperature For Storage	-40...70 °C
Overvoltage Category	Class II conforming to IEC 60536 Class II conforming to NF C 20-030

Packing Units

Unit Type Of Package 1	PCE
Number Of Units In Package 1	1
Package 1 Height	9.7 cm
Package 1 Width	9.7 cm
Package 1 Length	27.5 cm
Package 1 Weight	1.444 kg
Unit Type Of Package 2	S03
Number Of Units In Package 2	5
Package 2 Height	30.0 cm
Package 2 Width	30.0 cm
Package 2 Length	40.0 cm
Package 2 Weight	7.806 kg

Contractual warranty

Warranty	18 months
----------	-----------

Sustainability

Green Premium™ label is Schneider Electric's commitment to delivering products with best-in-class environmental performance. Green Premium promises compliance with the latest regulations, transparency on environmental impacts, as well as circular and low-CO₂ products.

Guide to assessing product sustainability is a white paper that clarifies global eco-label standards and how to interpret environmental declarations.

[Learn more about Green Premium >](#)

[Guide to assess a product's sustainability >](#)

Well-being performance

✓	Reach Free Of Svhc	
✓	Toxic Heavy Metal Free	
✓	Mercury Free	
✓	Rohs Exemption Information	Yes
Reach Regulation		REACH Declaration
Eu Rohs Directive		Pro-active compliance (Product out of EU RoHS legal scope) EU RoHS Declaration
China Rohs Regulation		China RoHS declaration
Weee		The product must be disposed on European Union markets following specific waste collection and never end up in rubbish bins
California Proposition 65		WARNING: This product can expose you to chemicals including: Nickel compounds, which is known to the State of California to cause cancer, and Di-isodecyl phthalate (DIDP), which is known to the State of California to cause birth defects or other reproductive harm. For more information go to www.P65Warnings.ca.gov

Dimensions Drawings

Dimensions

Front Mounting



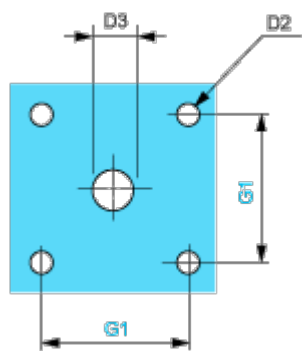
e support panel thickness 0.5 to 5.5 mm / 0.02 to 0.22 in in.

a		b		c		D1	
mm	in.	mm	in.	mm	in.	mm	in.
194	7.64	84	3.31	88	3.46	5.4	0.21

Mounting and Clearance

Panel Cut-Out

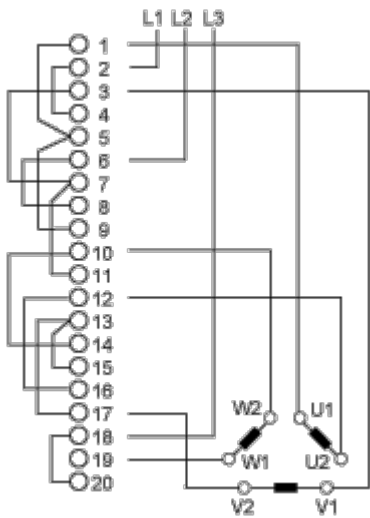
Front Mounting



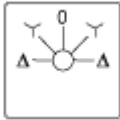
D2		D3		G1	
mm	in.	mm	in.	mm	in.
6	0.24	13	0.51	68	2.68

Technical Description

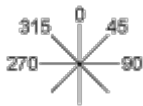
Link Positions (Factory Mounted)



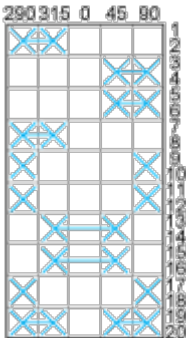
Marking



Angular Position of Switch



Switching Program



Convention Used for Switching Program Representation

-  Contact closed
-  Contact closed in 2 positions and maintained between the 2 positions
-  Sealed assembly for auto-maintain control
-  Overlapping contacts
-  Spring return position: for a switching angle of 90°, spring return is over 30° after the last position (for a maximum of 3 simultaneous contacts).

Example:

