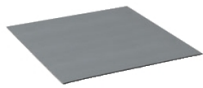



Product data sheet

Specifications

OptiLine 50 - lid infill linoleum for 15 module plastic box



ISM50819

 **Discontinued on:** Dec 15, 2023

 **Discontinued**

Main

Range	OptiLine
Cabling Installation System	Floor outlet box
Product Type	Lid infill
Floor Box Shape	Rectangular
Colour	Grey
Quantity Package 1 / Unit	1 piece

Complementary

Suitable For	For 15 module plastic box
Fixing Mode	Self-adhesive tape
Product Material	Linoleum
Length	6 mm
Height	162 mm
Width	316 mm

Packing Units

Unit Type Of Package 1	PCE
Number Of Units In Package 1	1
Package 1 Height	0.6 cm
Package 1 Width	16.3 cm
Package 1 Length	31.6 cm
Package 1 Weight	252.0 g

Contractual warranty

Warranty	18 months
----------	-----------

Disclaimer: This documentation is not intended as a substitute for and is not to be used for determining suitability or reliability of these products for specific user applications

Sustainability

Green Premium™ label is Schneider Electric's commitment to delivering products with best-in-class environmental performance. Green Premium promises compliance with the latest regulations, transparency on environmental impacts, as well as circular and low-CO₂ products.

Guide to assessing product sustainability is a white paper that clarifies global eco-label standards and how to interpret environmental declarations.

[Learn more about Green Premium >](#)

[Guide to assess a product's sustainability >](#)

Eu Rohs Directive

Not applicable, out of EU RoHS legal scope
