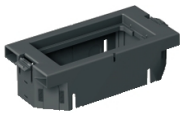


Product data sheet

Specifications

Optiline 45 - mounting frame for 1-2 Altira outlets



ISM50809N

Main

Range	OptiLine
Cabling Installation System	Floor box
Product Type	Mounting frame
Type Of Floor	In-cavity floor Raised floor Screeded floor
Floor Box Shape	Rectangular Square
Colour	Grey
Quantity Package 1 / Unit	6 pieces

Complementary

Suitable For	For 1-2 Altira outlets
Fixing Mode	Snap-fitted
Number Of Modules	2 modules
Product Material	PC/ABS
Length	139 mm
Height	38 mm
Width	64 mm

Environment

Operating Temperature	-25...60 °C
Ip Degree Of Protection	IP20

Packing Units

Unit Type Of Package 1	PCE
Number Of Units In Package 1	1
Package 1 Height	6.500 cm
Package 1 Width	13.200 cm
Package 1 Length	20.000 cm
Package 1 Weight	48.000 g
Unit Type Of Package 2	BB1
Number Of Units In Package 2	6

Disclaimer: This documentation is not intended as a substitute for and is not to be used for determining suitability or reliability of these products for specific user applications

Package 2 Height	6.500 cm
Package 2 Width	13.200 cm
Package 2 Length	20.000 cm
Package 2 Weight	303.000 g
Unit Type Of Package 3	S03
Number Of Units In Package 3	60
Package 3 Height	30.000 cm
Package 3 Width	30.000 cm
Package 3 Length	40.000 cm
Package 3 Weight	3.517 kg

Sustainability

Green Premium™ label is Schneider Electric's commitment to delivering products with best-in-class environmental performance. Green Premium promises compliance with the latest regulations, transparency on environmental impacts, as well as circular and low-CO₂ products.

Guide to assessing product sustainability is a white paper that clarifies global eco-label standards and how to interpret environmental declarations.

[Learn more about Green Premium >](#)

[Guide to assess a product's sustainability >](#)

Eu Rohs Directive	Not applicable, out of EU RoHS legal scope
-------------------	--
