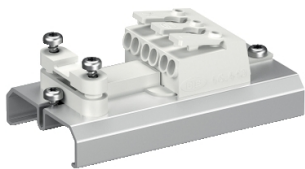


Product data sheet

Specifications



OptiLine 45 - Connection block - 30x75x40

ISM20450

⚠ Discontinued on: Jun 30, 2023

⚠ Discontinued

Main

Range Of Product	OptiLine 45
Product Type	Terminal block
Quantity Package 1 / Unit	1 piece

Complementary

Device Composition	Front cover Screw Strain relief
Product Material	PC (polycarbonate) Aluminium
Height	30 mm
Width	75 mm
Depth	40 mm

Environment

Operating Temperature	-5...60 °C
Ip Degree Of Protection	IP30

Packing Units

Unit Type Of Package 1	PCE
Number Of Units In Package 1	1
Package 1 Height	2.5 cm
Package 1 Width	14.0 cm
Package 1 Length	18.0 cm
Package 1 Weight	42.0 g
Unit Type Of Package 2	S03
Number Of Units In Package 2	100
Package 2 Height	30.0 cm
Package 2 Width	30.0 cm
Package 2 Length	40.0 cm
Package 2 Weight	4.687 kg

Disclaimer: This documentation is not intended as a substitute for and is not to be used for determining suitability or reliability of these products for specific user applications

Sustainability

Green Premium™ label is Schneider Electric’s commitment to delivering products with best-in-class environmental performance. Green Premium promises compliance with the latest regulations, transparency on environmental impacts, as well as circular and low-CO₂ products.

Guide to assessing product sustainability is a white paper that clarifies global eco-label standards and how to interpret environmental declarations.

[Learn more about Green Premium >](#)

[Guide to assess a product’s sustainability >](#)

Well-being performance

 Toxic Heavy Metal Free

 Mercury Free

 Rohs Exemption Information

Yes

Eu Rohs Directive

Pro-active compliance (Product out of EU RoHS legal scope)
[EU RoHS Declaration](#)

China Rohs Regulation

[China RoHS declaration](#)
Pro-active China RoHS declaration (out of China RoHS legal scope)
