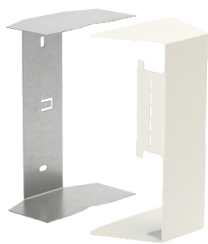



# Product data sheet

Specifications



## Stago - internal corner adjustable - 170A x 65 mm - steel - white - RAL9010

INS5553313

 **Discontinued on:** Jan 3, 2022

 **Discontinued**

**Important message:** This product belongs to Cable Support which is no longer commercialized by Schneider Electric. As per the first of January 2022 the commercialization is managed by Wibe-Group, Please follow the link [www.wibe-group.com](http://www.wibe-group.com) for further details.

### Main

Range Of Product	Stago
Product Or Component Type	Internal corner
Colour Tint	White (RAL 9010)
Quantity Per Set	Set of 1

### Complementary

Trunking Dimension	170A x 65 mm
Compartment Partitioning	1 compartment
Front Opening Size	80 mm
Nominal Cross Section	11050 mm <sup>2</sup>
Fixing Mode	By screws
Material	Zinc coated sheet steel
Surface Finish	Powder coated
Length	115 mm
Height	170 mm
Width	65 mm
Compatibility Code	WGX-IA170A

### Environment

Standards	EN 50085-1:2005 EN 50085-2-1:2006
Directives	73/23/EEC - low voltage directive
Ambient Air Temperature For Operation	-20...80 °C
Ip Degree Of Protection	IP20

### Packing Units

Unit Type Of Package 1	PCE
Number Of Units In Package 1	1
Package 1 Height	17 cm

Disclaimer: This documentation is not intended as a substitute for and is not to be used for determining suitability or reliability of these products for specific user applications

Package 1 Width	6.5 cm
Package 1 Length	11.5 cm
Package 1 Weight	280 g

## Contractual warranty

Warranty	18 months
----------	-----------

## Sustainability

**Green Premium™ label** is Schneider Electric's commitment to delivering products with best-in-class environmental performance. Green Premium promises compliance with the latest regulations, transparency on environmental impacts, as well as circular and low-CO<sub>2</sub> products.

**Guide to assessing product sustainability** is a white paper that clarifies global eco-label standards and how to interpret environmental declarations.

[Learn more about Green Premium >](#)

[Guide to assess a product's sustainability >](#)



Transparency   RoHS/REACH

## Well-being performance

✓ Reach Free Of Svhc

✓ Toxic Heavy Metal Free

✓ Mercury Free

✓ Rohs Exemption Information   Yes

## Certifications & Standards

Reach Regulation	<a href="#">REACH Declaration</a>
Eu Rohs Directive	Pro-active compliance (Product out of EU RoHS legal scope) <a href="#">EU RoHS Declaration</a>
China Rohs Regulation	<a href="#">China RoHS declaration</a> Pro-active China RoHS declaration (out of China RoHS legal scope)
Environmental Disclosure	<a href="#">Product Environmental Profile</a>
Circularity Profile	No need of specific recycling operations