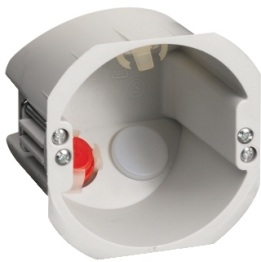


Product data sheet

Specifications



Multifix Multi - apparatus box - single - DIY

IMT36331

 **Discontinued on:** Jun 12, 2017

 **Discontinued**

Main

Range Of Product	Multifix
Product Name	Multifix Multi
Product Or Component Type	Multi apparatus box
Quantity Per Set	Set of 10

Complementary

Device Mounting	Flush
Mounting Support	Hollow wall
Number Of Gangs	1 gang
Cable Entry	4 angled entry for 16 mm bottom flexible conduit
Colour Tint	Grey (NCS 3500)
Material	PEHD (polyethylene high density)
Distance Between Supports	60 mm
Length	82 mm
Width	82 mm
Depth	62 mm

Environment

Standards	IEC 60670-1
Ambient Air Temperature For Operation	-25...90 °C
Ip Degree Of Protection	IP30

Packing Units

Unit Type Of Package 1	PCE
Number Of Units In Package 1	1
Package 1 Height	9.5 cm
Package 1 Width	5.8 cm
Package 1 Length	9.8 cm
Package 1 Weight	1 g

Contractual warranty

Disclaimer: This documentation is not intended as a substitute for and is not to be used for determining suitability or reliability of these products for specific user applications

Warranty

18 months