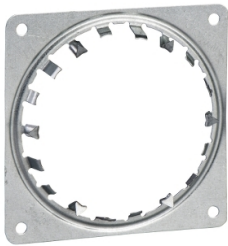


Product data sheet

Specifications



Multifix TED - stub - TED-S16N - set of 100

IMT36270

 **Discontinued on:** Nov 30, 2021

 **Discontinued**

Main

Range Of Product	Multifix
Product Name	Multifix TED
Device Short Name	TED-S16N
Product Or Component Type	Single stub
Quantity Per Set	Set of 100

Complementary

Stub Stiffness	Rigid
Product Destination	Conduit 1 16 mm
Colour Tint	White
Material	PA (polyamide)
Length	39 mm
Width	22 mm
Depth	22 mm
Net Weight	0.003 kg

Packing Units

Unit Type Of Package 1	PCE
Number Of Units In Package 1	1
Package 1 Height	2.3 cm
Package 1 Width	2.2 cm
Package 1 Length	3.9 cm
Package 1 Weight	5.61 g

Contractual warranty

Warranty	18 months
----------	-----------

Disclaimer: This documentation is not intended as a substitute for and is not to be used for determining suitability or reliability of these products for specific user applications

Sustainability

Green Premium™ label is Schneider Electric's commitment to delivering products with best-in-class environmental performance. Green Premium promises compliance with the latest regulations, transparency on environmental impacts, as well as circular and low-CO₂ products.

Guide to assessing product sustainability is a white paper that clarifies global eco-label standards and how to interpret environmental declarations.

[Learn more about Green Premium >](#)

[Guide to assess a product's sustainability >](#)



Transparency RoHS/REACH

Well-being performance

✓ Reach Free Of Svhc

✓ Toxic Heavy Metal Free

✓ Mercury Free

✓ Rohs Exemption Information Yes

Certifications & Standards

Reach Regulation	REACH Declaration
Eu Rohs Directive	Pro-active compliance (Product out of EU RoHS legal scope) EU RoHS Declaration
China Rohs Regulation	China RoHS declaration Pro-active China RoHS declaration (out of China RoHS legal scope)
Environmental Disclosure	Product Environmental Profile
Circularity Profile	No need of specific recycling operations