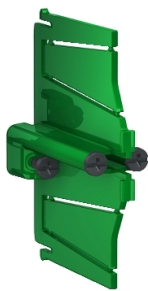


# Product data sheet

Specifications



## Multifix - Divider 50mm for flush mounting box

IMT35995

### Main

Range Of Product	Multifix
Range	Multifix
Product Or Component Type	Divider

### Complementary

Colour Tint	Green
Width	67 mm
Depth	50 mm

### Packing Units

Unit Type Of Package 1	PCE
Number Of Units In Package 1	1
Package 1 Height	3.0 cm
Package 1 Width	10.0 cm
Package 1 Length	11.0 cm
Package 1 Weight	105.0 g
Unit Type Of Package 2	BB1
Number Of Units In Package 2	10
Package 2 Height	13.3 cm
Package 2 Width	23.3 cm
Package 2 Length	26.2 cm
Package 2 Weight	1.176 kg
Unit Type Of Package 3	S04
Number Of Units In Package 3	60
Package 3 Height	30.0 cm
Package 3 Width	40.0 cm
Package 3 Length	60.0 cm
Package 3 Weight	7.857 kg

Disclaimer: This documentation is not intended as a substitute for and is not to be used for determining suitability or reliability of these products for specific user applications

## Sustainability

**Green Premium™ label** is Schneider Electric’s commitment to delivering products with best-in-class environmental performance. Green Premium promises compliance with the latest regulations, transparency on environmental impacts, as well as circular and low-CO<sub>2</sub> products.

**Guide to assessing product sustainability** is a white paper that clarifies global eco-label standards and how to interpret environmental declarations.

[Learn more about Green Premium >](#)

[Guide to assess a product’s sustainability >](#)



RoHS/REACH

## Well-being performance

✓	Reach Free Of Svhc	
✓	Toxic Heavy Metal Free	
✓	Mercury Free	
✓	Rohs Exemption Information	Yes

## Certifications & Standards

Reach Regulation	<a href="#">REACH Declaration</a>
Eu Rohs Directive	Pro-active compliance (Product out of EU RoHS legal scope) <a href="#">EU RoHS Declaration</a>
China Rohs Regulation	<a href="#">China RoHS declaration</a> Pro-active China RoHS declaration (out of China RoHS legal scope)
Circularity Profile	No need of specific recycling operations