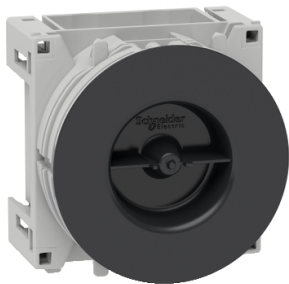


Product data sheet

Specifications



Multifix Ultra - Apparatus box for conduits with lid

IMT35259

Main

Product Or Component Type	Apparatus box
Device Application	Conduit installation

Complementary

Device Mounting	Flush
Device Composition	Cover Body
Mounting Support	Board - thickness: 13...26 mm
Number Of Stubs	4 flexible - diameter: 20 mm
Colour Tint	Grey
Material	PP (polypropylene)
Length	71 mm
Width	75 mm
Depth	58 mm
Net Weight	0.046 kg

Packing Units

Unit Type Of Package 1	PCE
Number Of Units In Package 1	1
Package 1 Height	5.9 cm
Package 1 Width	7.5 cm
Package 1 Length	7.5 cm
Package 1 Weight	47.0 g
Unit Type Of Package 2	CAR
Number Of Units In Package 2	125
Package 2 Height	36.6 cm
Package 2 Width	31.1 cm
Package 2 Length	41.0 cm
Package 2 Weight	6.1 kg
Unit Type Of Package 3	P12
Number Of Units In Package 3	2250
Package 3 Height	50.0 cm

Disclaimer: This documentation is not intended as a substitute for and is not to be used for determining suitability or reliability of these products for specific user applications

Package 3 Width	80.0 cm
Package 3 Length	120.0 cm
Package 3 Weight	121.8 kg

Sustainability

Green Premium™ label is Schneider Electric's commitment to delivering products with best-in-class environmental performance. Green Premium promises compliance with the latest regulations, transparency on environmental impacts, as well as circular and low-CO₂ products.

Guide to assessing product sustainability is a white paper that clarifies global eco-label standards and how to interpret environmental declarations.

[Learn more about Green Premium >](#)

[Guide to assess a product's sustainability >](#)



RoHS/REACH

Well-being performance

✓ Reach Free Of Svhc

✓ Toxic Heavy Metal Free

✓ Mercury Free

✓ Rohs Exemption Information Yes

Certifications & Standards

Reach Regulation	REACH Declaration
Eu Rohs Directive	Compliant EU RoHS Declaration
China Rohs Regulation	China RoHS declaration Pro-active China RoHS declaration (out of China RoHS legal scope)
Circularity Profile	No need of specific recycling operations