

Product data sheet

Specifications



Motion integrated drive, Lexium integrated drive, ILT with stepper motor, 24VDC to 48VDC, pulse/direction, 1.44Nm

ILT2V573MB0A

Main

Range Of Product	Lexium integrated drive
Product Or Component Type	Motion integrated drive
Device Short Name	ILT
Motor Type	2-phase stepper motor
Network Type	DC
Electrical Connection	Flying leads
[Us] Rated Supply Voltage	24...48 V
Communication Interface	Pulse/Direction 5 -24 V
Length	98.55 mm
Winding Type	Medium speed of rotation and medium torque
Holding Brake	Without
Gear Box Type	Without
Nominal Speed	300 rpm at 24 V 450 rpm at 48 V
Holding Torque	1.44 N.m

Complementary

Mounting Support	Flange
Motor Flange Size	57 mm
Feedback Type	Without
Supply Voltage Limits	12...48 V
Current Consumption	3.2 A maximum continuous
Input/Output Type	3 inputs (Step Clock, Direction, Enable)
Voltage State 1 Guaranteed	>= 2.2 V
Protection Type	Overload of output voltage Short circuit of the output voltage
Peak Stall Torque	1.44 N.m
Continuous Stall Torque	1.44 N.m

Disclaimer: This documentation is not intended as a substitute for and is not to be used for determining suitability or reliability of these products for specific user applications

Speed Feedback Resolution	1000 steps
	10000 steps
	12800 steps
	1600 steps
	200 steps
	2000 steps
	20000 steps
	25000 steps
	25600 steps
	3200 steps
	400 steps
	40000 steps
	5000 steps
	50000 steps
	51200 steps
	6400 steps
	800 steps
Accuracy Error	+/- 0.3 arc/min
Rotor Inertia	0.46 kg.cm²
Service Life In Hours	20000 h
Marking	CE
Net Weight	1.11 kg

Environment

Standards	IEC 61000-4-11
	EN 61000-3-2 : 2006
	EMC immunity IEC 61000-4-2
	IEC 61000-4-6
	IEC 61000-4-3
	EN 55011:2007, A2:2007 for Group 1, Class A
	EN 61000-3-3:1995, A1:2001, A2:2005
	IEC 61000-4-4
	IEC 61000-4-5
Ambient Air Temperature For Operation	50...65 °C (with power derating of 2 % per °C) 0...50 °C (without derating)
Permissible Ambient Air Temperature Around The Device	100 °C
Ambient Air Temperature For Storage	-25...70 °C
Operating Altitude	<= 1000 m without derating
Relative Humidity	15...85 % without condensation
Ip Degree Of Protection	IP20 total except shaft bushing: conforming to EN/IEC 60034-5 IP41 shaft bushing: conforming to EN/IEC 60034-5

Packing Units

Unit Type Of Package 1	PCE
Number Of Units In Package 1	1
Package 1 Height	9.0 cm
Package 1 Width	13.5 cm
Package 1 Length	19.8 cm
Package 1 Weight	1.308 kg
Unit Type Of Package 2	S03
Number Of Units In Package 2	8
Package 2 Height	30.0 cm
Package 2 Width	30.0 cm
Package 2 Length	40.0 cm

Package 2 Weight	11.177 kg
------------------	-----------

Contractual warranty

Warranty	18 months
----------	-----------

Sustainability




Green Premium™ label is Schneider Electric’s commitment to delivering products with best-in-class environmental performance. Green Premium promises compliance with the latest regulations, transparency on environmental impacts, as well as circular and low-CO₂ products.

Guide to assessing product sustainability is a white paper that clarifies global eco-label standards and how to interpret environmental declarations.

[Learn more about Green Premium >](#)

[Guide to assess a product’s sustainability >](#)

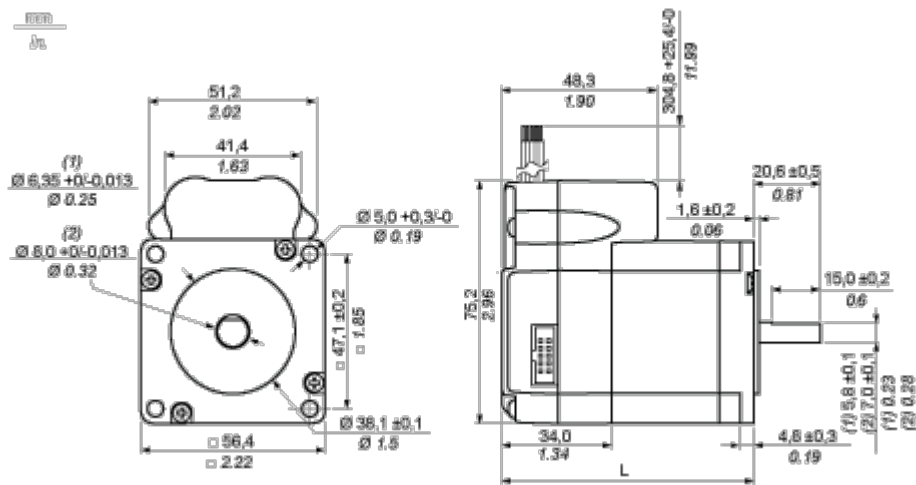
Well-being performance

 Mercury Free	
 Rohs Exemption Information	Yes
 Pvc Free	
Reach Regulation	REACH Declaration
Eu Rohs Directive	Pro-active compliance (Product out of EU RoHS legal scope)
China Rohs Regulation	China RoHS declaration
Weee	The product must be disposed on European Union markets following specific waste collection and never end up in rubbish bins
California Proposition 65	WARNING: This product can expose you to chemicals including: Lead and lead compounds, which is known to the State of California to cause cancer and birth defects or other reproductive harm. For more information go to www.P65Warnings.ca.gov

Dimensions Drawings

Integrated Drive with Flying Leads

Dimensions



(1) Single, Double & Triple Length Motors

(2) Quad Length Motor

L 98.55 mm/3.88 in.

Connections and Schema

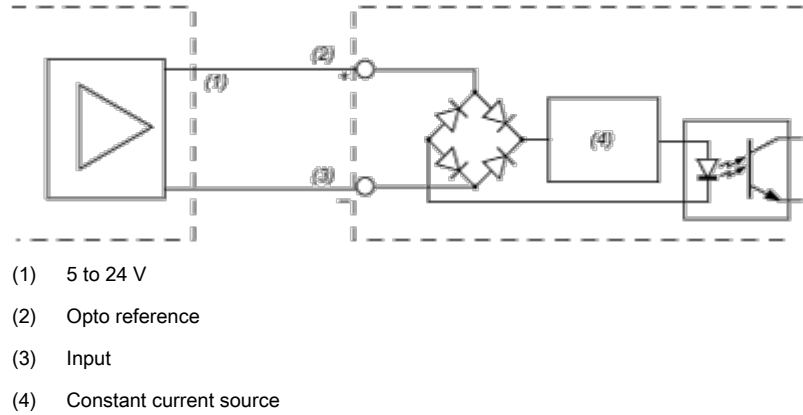
Multifunction Interface

Wiring Diagrams

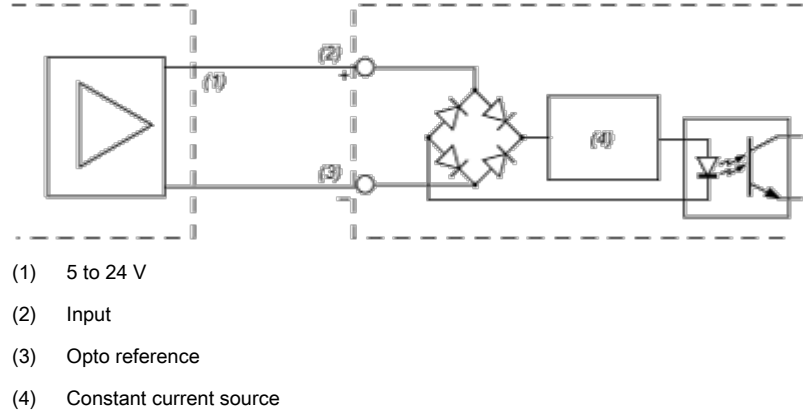
The multifunction interface operates at 5 to 24 V opto-isolated, sinking or sourcing

The reference pulses are supplied via two of the signal inputs as pulse/direction signals. The remaining signal inputs have the function “power amplifier enable/pulse blocking” and optocoupler reference, which establishes the inputs as sinking or sourcing.

Circuit of signal inputs sinking

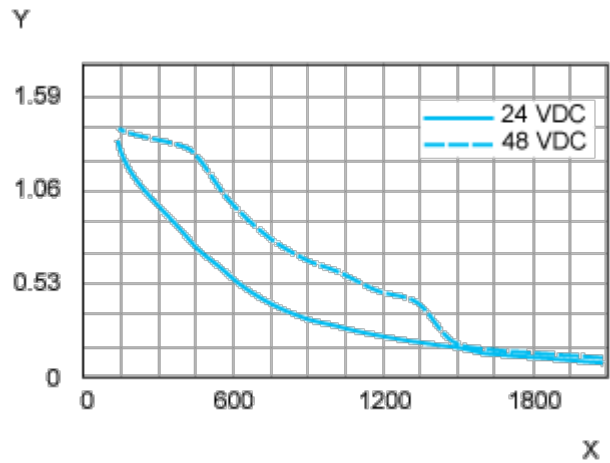


Circuit of signal inputs sourcing



Performance Curves

Torque Characteristics



X Speed of rotation in rpm

Y Torque in Nm