

Product data sheet

Specifications



integrated drive ILP with 2-phase
stepper motor - 24..48 V DC -
RS485 - 0.33 N.m

ILP2R422MC1A

⚠ End-of-service on: Nov 18, 2020

⚠ Discontinued

Main

Range Of Product	Lexium integrated drive
Product Or Component Type	Motion integrated drive
Device Short Name	ILP
Motor Type	2-phase stepper motor
Network Type	DC
Electrical Connection	Industrial connector
[Us] Rated Supply Voltage	24...48 V
Length	83.57 mm
Winding Type	Medium speed of rotation and medium torque
Gear Box Type	Without
Nominal Speed	400 rpm at 24 V 600 rpm at 48 V
Holding Torque	0.33 N.m

Complementary

Communication Interface	RS485
Transmission Rate	4.8, 9.6, 19.2, 38.4, 115 kbauds
Mounting Support	Flange
Motor Flange Size	42 mm
Feedback Type	Index pulse
Holding Brake	Without
Supply Voltage Limits	12...48 V
Current Consumption	1.3 A maximum continuous
Input/Output Type	11 signals (each be used as input or output)
Voltage State 0 Guaranteed	<= 0.8 V
Voltage State 1 Guaranteed	>= 2.2 V
Discrete Input Current	1.75 mA at 24 V for 24 V signal interface
Maximum Switching Current	275 mA four channels 600 mA single channel
Protection Type	Short circuit of the output voltage Overload of output voltage
Peak Stall Torque	0.33 N.m

Disclaimer: This documentation is not intended as a substitute for and is not to be used for determining suitability or reliability of these products for specific user applications

Continuous Stall Torque	0.33 N.m
Speed Feedback Resolution	1000 steps 10000 steps 12800 steps 1600 steps 200 steps 2000 steps 20000 steps 25000 steps 25600 steps 3200 steps 400 steps 40000 steps 5000 steps 50000 steps 51200 steps 6400 steps 800 steps
Accuracy Error	+/- 0.3 arc/min
Rotor Inertia	0.057 kg.cm²
Service Life In Hours	20000 h
Marking	CE
Net Weight	0.34 kg

Environment

Standards	IEC 61000-4-4 EN 61000-3-3:1995, A1:2001, A2:2005 IEC 61000-4-5 IEC 61000-4-6 IEC 61000-4-11 EN 55011:2007, A2:2007 for Group 1, Class A EMC immunity IEC 61000-4-2 EN 61000-3-2 : 2006 IEC 61000-4-3
Ambient Air Temperature For Operation	50...65 °C (with power derating of 2 % per °C) 0...50 °C (without derating)
Permissible Ambient Air Temperature Around The Device	100 °C
Ambient Air Temperature For Storage	-25...70 °C
Operating Altitude	<= 1000 m without derating
Relative Humidity	15...85 % without condensation
Ip Degree Of Protection	IP41 shaft bushing: conforming to EN/IEC 60034-5 IP54 total except shaft bushing: conforming to EN/IEC 60034-5

Packing Units

Unit Type Of Package 1	PCE
Number Of Units In Package 1	1
Package 1 Height	9 cm
Package 1 Width	13.5 cm
Package 1 Length	19.8 cm
Package 1 Weight	630 g

Contractual warranty

Warranty	18 months
----------	-----------

Sustainability




Green Premium™ label is Schneider Electric’s commitment to delivering products with best-in-class environmental performance. Green Premium promises compliance with the latest regulations, transparency on environmental impacts, as well as circular and low-CO₂ products.

Guide to assessing product sustainability is a white paper that clarifies global eco-label standards and how to interpret environmental declarations.

[Learn more about Green Premium >](#)

[Guide to assess a product’s sustainability >](#)

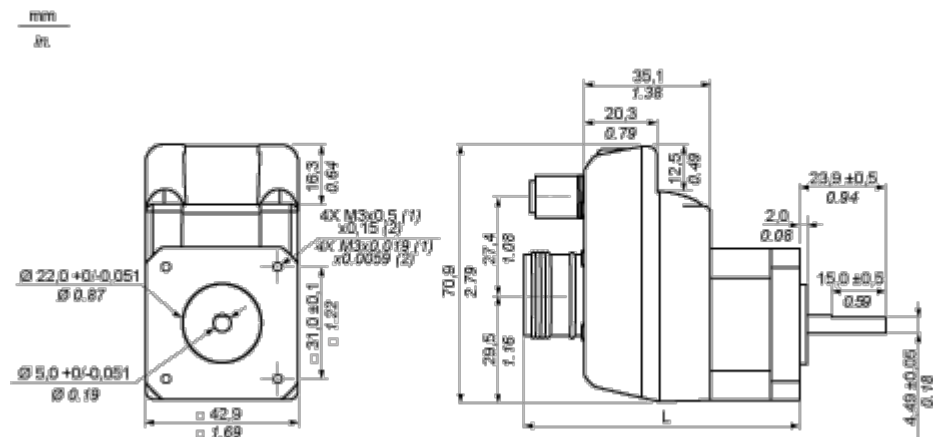
Well-being performance

 Mercury Free	
 Rohs Exemption Information	Yes
 Pvc Free	
Reach Regulation	REACH Declaration
Eu Rohs Directive	Pro-active compliance (Product out of EU RoHS legal scope)
China Rohs Regulation	China RoHS declaration
Weee	The product must be disposed on European Union markets following specific waste collection and never end up in rubbish bins
California Proposition 65	WARNING: This product can expose you to chemicals including: Lead and lead compounds, which is known to the State of California to cause cancer and birth defects or other reproductive harm. For more information go to www.P65Warnings.ca.gov

Dimensions Drawings

Integrated Drive with Industrial Connectors

Dimensions

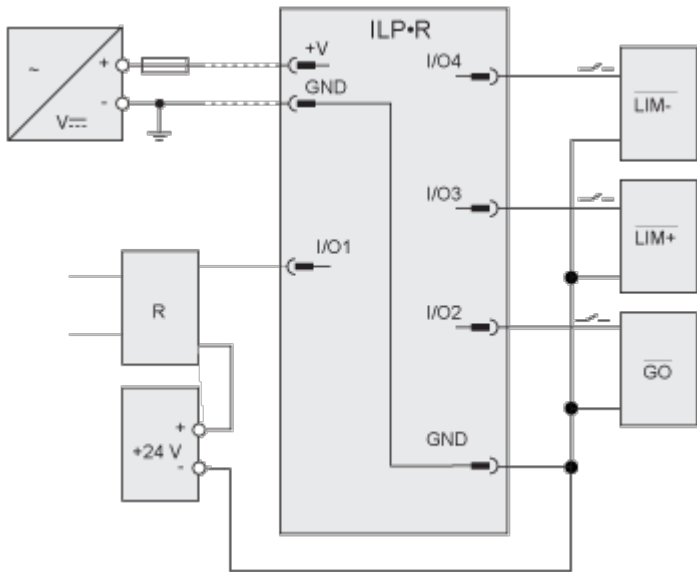


- (1) Thread
- (2) Depth
- L 83.57 mm/3.29 in.

Connections and Schema

Connection Example with 4 I/O Signals

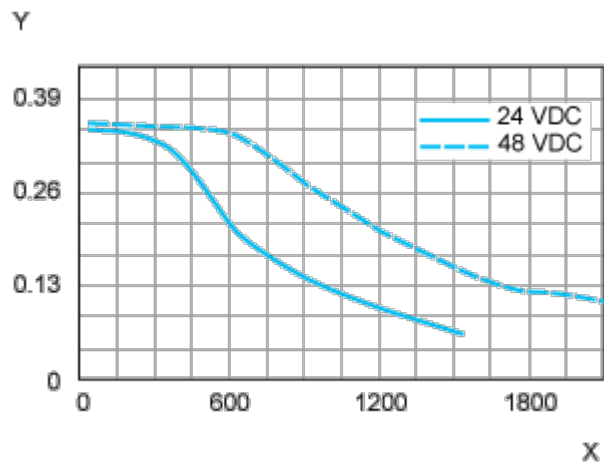
Three sinking inputs (I/O4 - I/O2) and a sourcing output (I/O1).



R Relay

Performance Curves

Torque Characteristics



- X Speed of rotation in rpm
- Y Torque in Nm