

Product data sheet

Specifications



EXtreme touchscreen panel,
Harmony GTUX, Series Display
12"W, Outdoor use, Rugged,
Coated

HMIDT65X

Main

Range Of Product	Harmony GTUX
Product Or Component Type	EXtreme touchscreen panel
Terminal Type	Touchscreen display
[Us] Rated Supply Voltage	12 V DC power supply
Supply Voltage Limits	10.8...28.8 V
Power Consumption In W	12.5 W
Inrush Current	30 A

Complementary

Touchscreen Resolution	1024 x 1024
Pixel Resolution	1280 x 800
Display Size	12.1 inch
Aspect Ratio	4:3
Display Type	Colour TFT LCD
Display Resolution	1280 x 800 pixels WVGA
Display Colour	262144 colors
Luminance	1000 cd/m²
Touch Panel	Single touch analogue resistive
Type Of Cooling	Natural convection
Cut-Out Dimensions	295 (+ 1/- 0) x 217 (+ 1/- 0) mm
Width	308.5 mm
Height	230.5 mm
Depth	68 mm
Net Weight	3.2 kg

Environment

Ip Degree Of Protection	IP66f IP67f Front panel: Type 4X
Standards	UL 61010 UL 121201 CSA C22.2 No 213 CSA C22.2 No 61010-1 IEC 61132-2

Disclaimer: This documentation is not intended as a substitute for and is not to be used for determining suitability or reliability of these products for specific user applications

Product Certifications	KC CE RCM EAC ATEX zone 2/22 IEC-Ex UL CSA UKCA UKEX
Ambient Air Temperature For Operation	-30...70 °C conforming to IEC 61131-2
Ambient Air Temperature For Storage	-30...70 °C
Pollution Degree	2
Environmental Characteristic	Corrosive gas free UV resistant
Relative Humidity	10...90 % non-condensing
Operating Altitude	2000 m
Vibration Resistance	7 mm constant amplitude (f = 5...9 Hz) conforming to IEC 61131-2 19.6 m/s² (f = 9...150 Hz) conforming to IEC 61131-2
Shock Resistance	392 m/s² conforming to IEC 61131-2
Electromagnetic Compatibility	Electrostatic discharge immunity test level 3 conforming to IEC 61000-4-2

Packing Units

Unit Type Of Package 1	PCE
Number Of Units In Package 1	1
Package 1 Height	18.6 cm
Package 1 Width	33 cm
Package 1 Length	43 cm
Package 1 Weight	4.605 kg
Unit Type Of Package 2	BB1
Number Of Units In Package 2	2
Package 2 Height	35 cm
Package 2 Width	42 cm
Package 2 Length	45 cm
Package 2 Weight	9.94 kg
Unit Type Of Package 3	P12
Number Of Units In Package 3	10
Package 3 Height	54 cm
Package 3 Width	80 cm
Package 3 Length	120 cm
Package 3 Weight	47.84 kg

Sustainability

Green Premium™ label is Schneider Electric's commitment to delivering products with best-in-class environmental performance. Green Premium promises compliance with the latest regulations, transparency on environmental impacts, as well as circular and low-CO₂ products.

Guide to assessing product sustainability is a white paper that clarifies global eco-label standards and how to interpret environmental declarations.

[Learn more about Green Premium >](#)

[Guide to assess a product's sustainability >](#)



Transparency RoHS/REACH

Well-being performance



Mercury Free



RoHS Exemption Information

Yes

Certifications & Standards

Reach Regulation

[REACH Declaration](#)

Eu RoHS Directive

Pro-active compliance (Product out of EU RoHS legal scope)

China RoHS Regulation

[China RoHS declaration](#)

Environmental Disclosure

[Product Environmental Profile](#)

Circularity Profile

[End of Life Information](#)

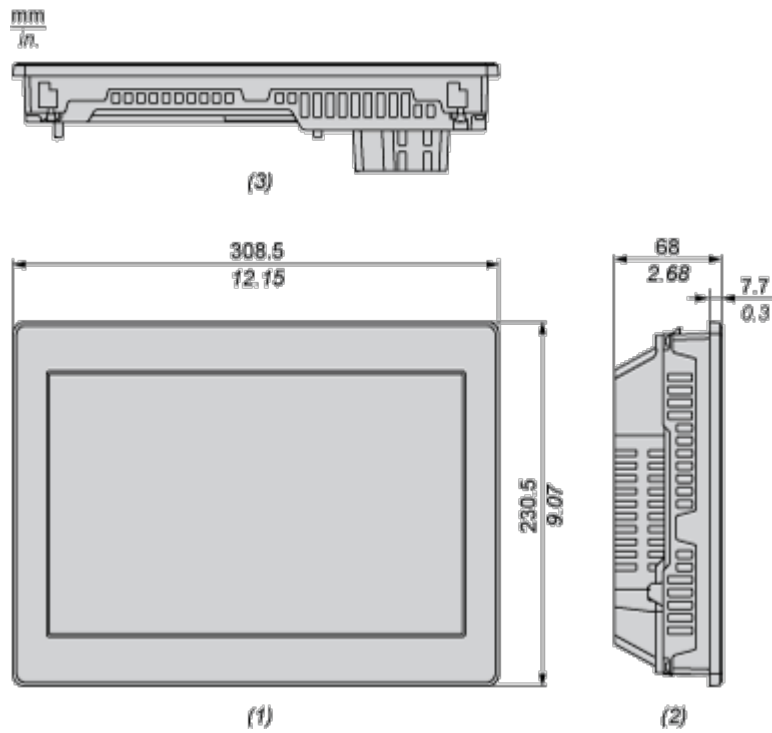
California Proposition 65

WARNING: This product can expose you to chemicals including: Lead and lead compounds, which is known to the State of California to cause cancer and birth defects or other reproductive harm. For more information go to www.P65Warnings.ca.gov

Dimensions Drawings

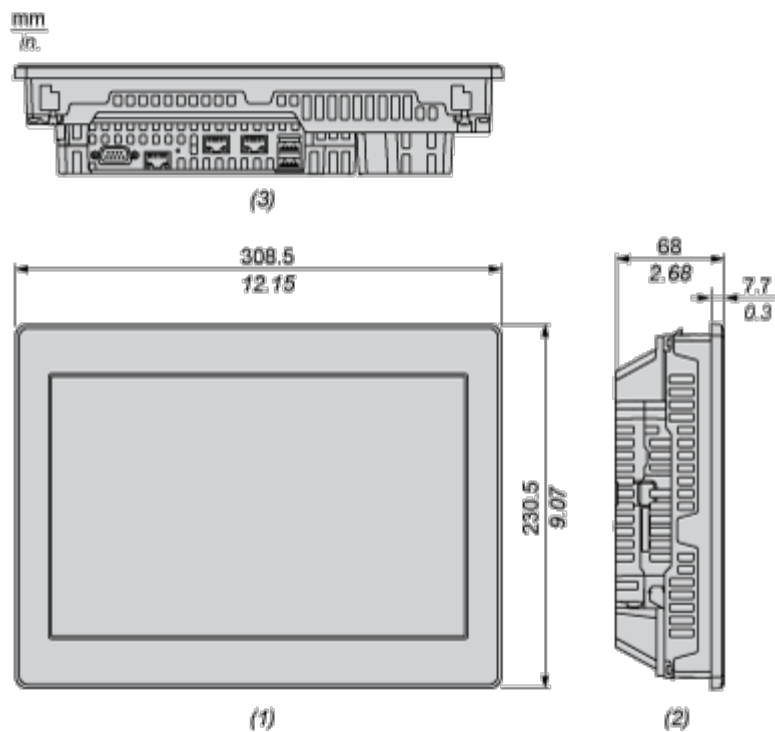
External Dimensions

Display Unit



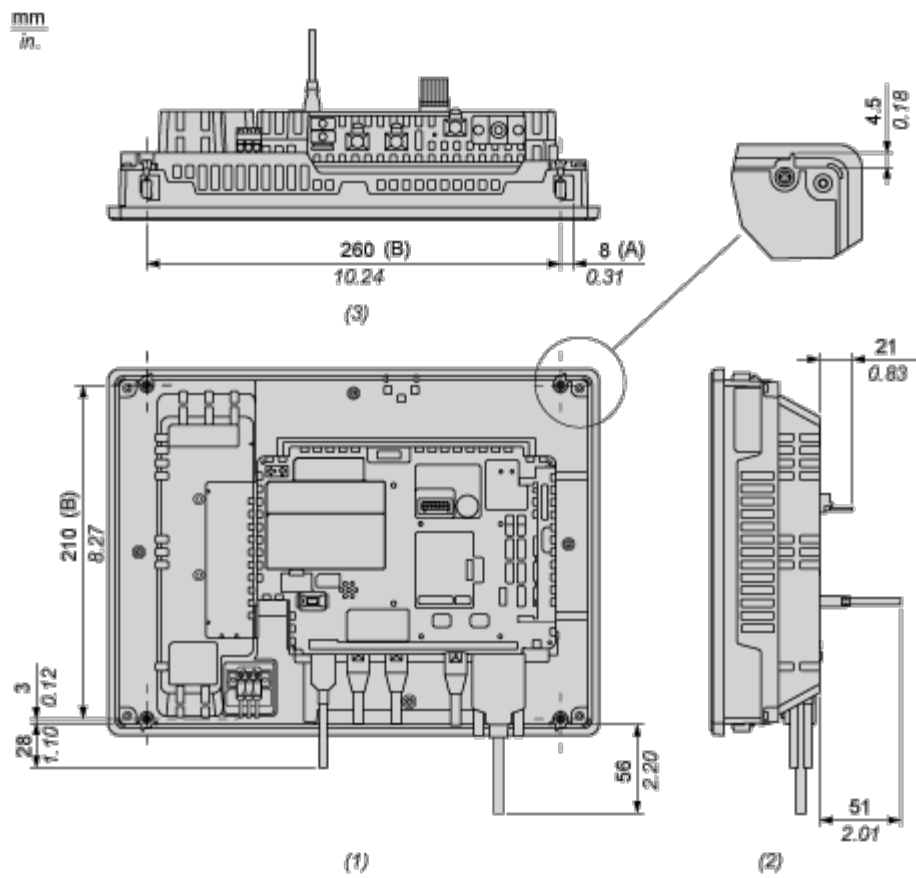
- 1 : Front
- 2 : Left
- 3 : Bottom

Display Unit with Box Module



- 1 : Front
- 2 : Left
- 3 : Bottom

Dimensions with Cables

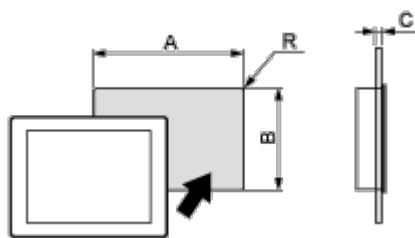


- (A) : Rotation area of the fastener
- (B) : Pitch of the enter of installation fastener screws
- 1 : Rear
- 2 : Right
- 3 : Bottom

Mounting and Clearance

Mounting and Clearance

Panel Cut Dimensions



Dimensions in mm

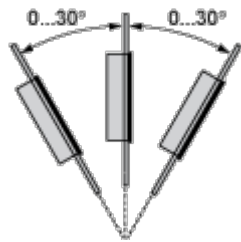
A	B	C	R
295 (+1/-0)	217 (+1/-0)	1.6...5	3 max.

Dimensions in in.

A	B	C	R
11.61 (+0.04/-0)	8.54 (+0.04/-0)	0.06...0.2	0.12 max.

Installation Requirements

Mounting Angle



When installing this product in a slanted position, the product face should not incline more that 30°.

Clearance

