



Product data sheet

Specifications



industrial touchscreen display - 15" - Multi-touch screen - 24 Vdc

HMIDID73DTD1

-  **Discontinued on:** Mar 30, 2023
-  **To be end-of-service on:** Mar 31, 2027

 **Discontinued - Service only**

Main

Range Of Product	Harmony iPC
Product Or Component Type	Flat screen
Terminal Type	Touchscreen display
Device Mounting	Flush

Complementary

Display Resolution	1024 x 768 pixels XGA
Display Size	15 inch
Aspect Ratio	4:3
Display Type	Colour TFT LCD
Display Colour	16 million colours
Luminance	400 cd/m ² 100 cd/m ²
Backlight Lifespan	50000 hours
Touch Panel	Multi touch analogue resistive 1000000 cycles
Integrated Connection Type	DVI-D video port USB 2.0 type A USB 2.0 type mini B
Function Available	Brightness sensor
[Us] Rated Supply Voltage	12...24 V DC power supply
Power Consumption In W	21 W
Provided Equipment	1 cable 5 m for DVI-D 1 cable 5 m for USB type A 1 USB cable for mini B USB 2.0
Cut-Out Dimensions	383.5 (+ 1/- 0) x 282.5 (+ 1/- 0) mm
Depth	67 mm
Height	296 mm
Width	397 mm
Net Weight	5.2 kg

Environment

Disclaimer: This documentation is not intended as a substitute for and is not to be used for determining suitability or reliability of these products for specific user applications

Standards	UL 508 ANSI/ISA 12-12-01 Class I division 2 CSA C22.2 No 213 CSA C22.2 No 142
Product Certifications	ATEX zone 2/22 EAC Marine GL Bridge RCM CE
Ip Degree Of Protection	Front panel: IP67f Front panel: IP66f conforming to UL 50E
Nema Degree Of Protection	NEMA 4X/13 front panel
Pollution Degree	2
Ambient Air Temperature For Storage	-20...60 °C
Vibration Resistance	3.5 mm constant amplitude (f = 5...9 Hz) conforming to IEC 61131-2 9.8 m/s² (f = 9...150 Hz) conforming to IEC 61131-2
Shock Resistance	147 m/s² conforming to EN/IEC 61131-2

Packing Units

Unit Type Of Package 1	PCE
Number Of Units In Package 1	1
Package 1 Height	30.0 cm
Package 1 Width	39.7 cm
Package 1 Length	59.8 cm
Package 1 Weight	8.494 kg

Sustainability



Green Premium™ label is Schneider Electric's commitment to delivering products with best-in-class environmental performance. Green Premium promises compliance with the latest regulations, transparency on environmental impacts, as well as circular and low-CO₂ products.

Guide to assessing product sustainability is a white paper that clarifies global eco-label standards and how to interpret environmental declarations.

[Learn more about Green Premium >](#)

[Guide to assess a product's sustainability >](#)

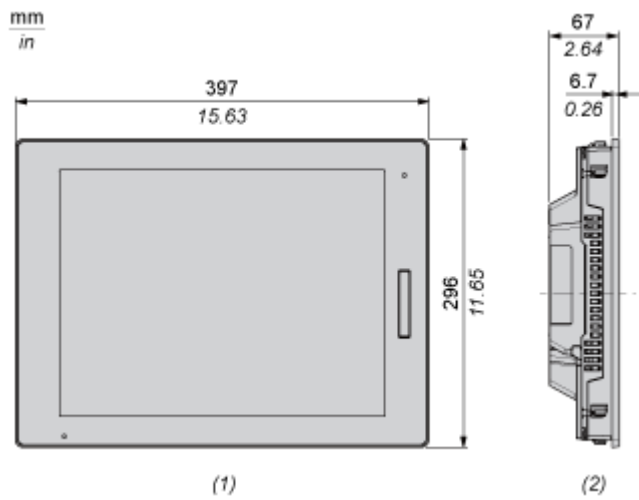
Well-being performance

 Mercury Free	
 Rohs Exemption Information	Yes
Reach Regulation	REACH Declaration
Eu Rohs Directive	Pro-active compliance (Product out of EU RoHS legal scope)
China Rohs Regulation	China RoHS declaration
Weee	The product must be disposed on European Union markets following specific waste collection and never end up in rubbish bins
California Proposition 65	WARNING: This product can expose you to chemicals including: Lead and lead compounds, which is known to the State of California to cause cancer and birth defects or other reproductive harm. For more information go to www.P65Warnings.ca.gov

Dimensions Drawings

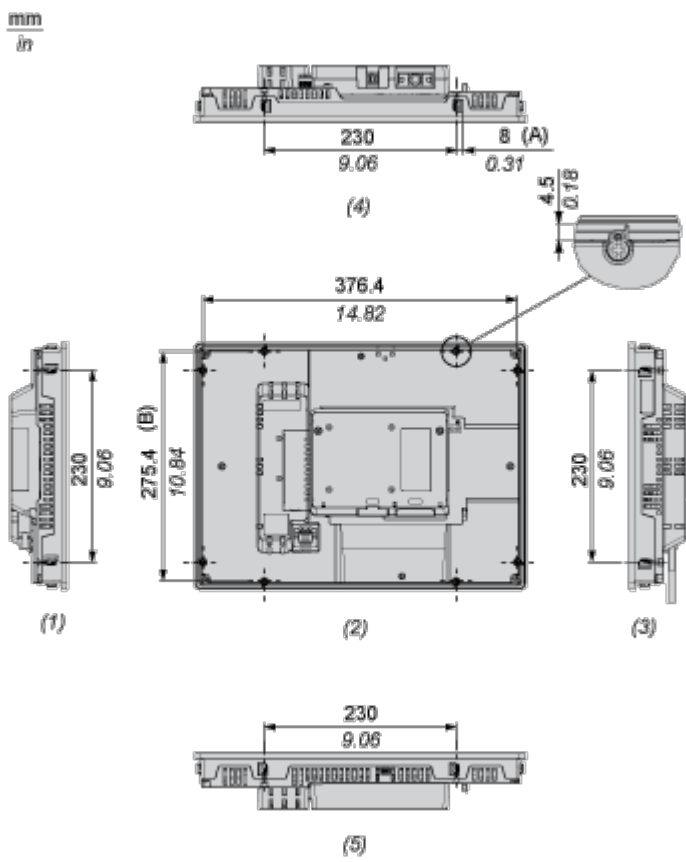
Dimensions

External Dimensions



- (1) Front
(2) Left

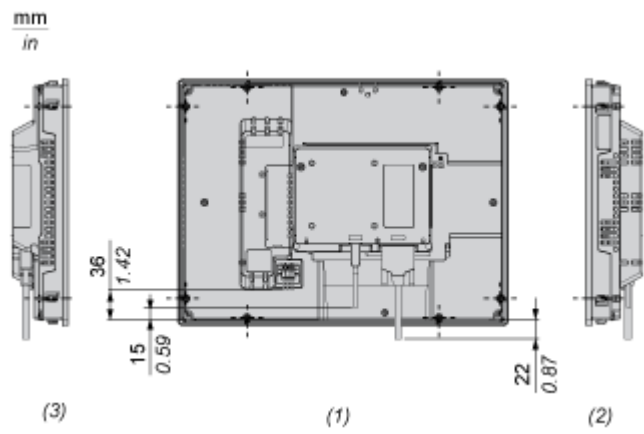
Installation with Installation Fasteners



- (A) Rotation area of the fastener

- (B) Pitch of the centre of installation fastener screws
- (1) Left
- (2) Rear
- (3) Right
- (4) Bottom
- (5) Top

Dimensions with Cables

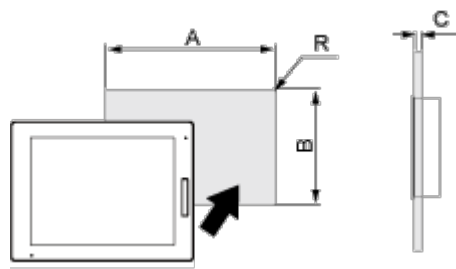


- (1) Rear
- (2) Right
- (3) Left

Mounting and Clearance

Mounting

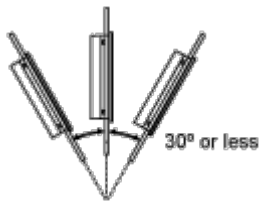
Panel Cut Dimensions



A		B		C		R	
mm	in.	mm	in.	mm	in.	mm	in.
383.5 (+1/-0)	15.1 (+0.04/-0)	282.5 (+1/-0)	11.12 (+0.04/-0)	1.6...5	0.06...0.2	3 max.	0.12 max.

Installation Requirements

Mounting Angle



When installing this product in a slanted position with an incline more than 30°, the ambient temperature must not exceed 40 °C (104 °F). You may need to use forced air cooling (fan, A/C) to ensure the ambient operating temperature is 40 °C or less (104 °F or less).

Clearance

