

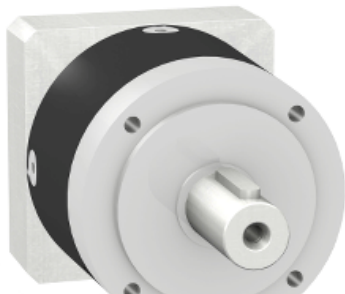
## Product data sheet

### Characteristics

# GBX1600401102G

gearbox with straight teeth GBX- Ø 160 mm-  
reduction 40:1- < 10arcmin- 700 N.m

GBX1600401102G has not been replaced. Please contact your customer care center for more information.



⚠ Discontinued

### Main

Range compatibility	Lexium 05
Product or component type	Planetary gearbox
Gear box type	Straight teeth
Device short name	GBX
Gearbox external diameter	160 mm
Product compatibility	BRH1102
Reduction ratio	40:1

### Complementary

Torsional backlash	< 10 arc.min
Torsional rigidity	41 N.m/arcmin
Housing colour	Black
Housing material	Black anodized aluminium
Shaft material	C 45
Additional information	Lubricated for life
Service life in hours	At 100 rpm at 30 °C
Efficiency	94 %
Mounting position	Any position
Maximum radial force Fr	4200 N at 100 rpm, force applied at mid-distance from output shaft during 30000 hour at 30 °C 6000 N at 100 rpm, force applied at mid-distance from output shaft during 10000 hour at 30 °C
Maximum axial force Fa	6000 N at 100 rpm, during 30000 hour at 30°C 8000 N at 100 rpm, during 10000 hour at 30°C
Moment of inertia	5.28 g.cm <sup>2</sup>
Continuous output torque	700 N.m at 100 rpm at 30 °C
Maximum output torque	1120 N.m at 100 rpm at 30 °C
Product weight	22 kg

### Environment

Noise level	70 dB at 1 m, no-load
IP degree of protection	IP54 on shaft output
Ambient temperature for operation	-25...90 °C

Contractual warranty

---

Warranty period	18 months
-----------------	-----------

---