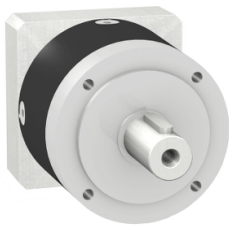


Product data sheet

Specifications



gearbox with straight teeth GBX- Ø
120 mm- reduction 60:1- <
14arcmin- 260 N.m

GBX1200600701F

⚠ Discontinued

Main

| | |
|---------------------------|------------------------|
| Range Compatibility | Lexium 15 Lexium 32 |
| Product Or Component Type | Planetary gearbox |
| Gear Box Type | Straight teeth |
| Device Short Name | GBX |
| Gearbox External Diameter | 120 mm |
| Product Compatibility | BSH0701... |
| Reduction Ratio | 60:1 |

Complementary

| | |
|----------------------------|--|
| Maximum Torsional Backlash | 14 arc.min |
| Torsional Rigidity | 12 N.m/arcmin |
| Housing Colour | Black |
| Housing Material | Black anodized aluminium |
| Shaft Material | C 45 |
| Additional Information | Lubricated for life |
| Service Life In Hours | 30000 h at 100 rpm at 30 °C |
| Efficiency | 90 % |
| Mounting Position | Any position |
| Maximum Radial Force Fr | 1500 N at 100 rpm, force applied at mid-distance from output shaft during 30000 hour at 30 °C 2000 N at 100 rpm, force applied at mid-distance from output shaft during 10000 hour at 30 °C |
| Maximum Axial Force Fa | 2100 N at 100 rpm, during 30000 hour at 30°C 2800 N at 100 rpm, during 10000 hour at 30°C |
| Moment Of Inertia | 2.57 g.cm² |
| Continuous Output Torque | 260 N.m at 100 rpm at 30 °C |
| Maximum Output Torque | 416 N.m at 100 rpm at 30 °C |
| Net Weight | 10 kg |

Environment

| | |
|-------------------------|-----------------------|
| Noise Level | 65 dB at 1 m, no-load |
| Ip Degree Of Protection | Shaft output: IP54 |

Disclaimer: This documentation is not intended as a substitute for and is not to be used for determining suitability or reliability of these products for specific user applications

| | |
|--------------------------------------|-------------|
| Ambient Temperature For Operation | -25...90 °C |
|--------------------------------------|-------------|

Contractual warranty

| | |
|----------|-----------|
| Warranty | 18 months |
|----------|-----------|