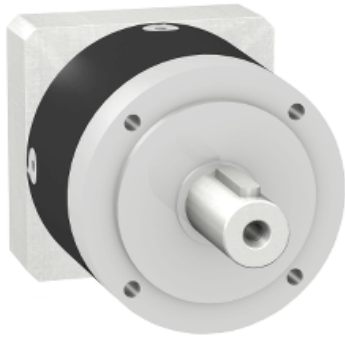


Product data sheet

Characteristics

GBX1200151402F

gearbox with straight teeth GBX- Ø 120 mm-
reduction 15:1- < 12arcmin- 230 N.m



Main

| | |
|---------------------------|--------------------------|
| Range compatibility | Lexium 32 |
| Product or component type | Planetary gearbox |
| Gear box type | Straight teeth |
| Device short name | GBX |
| Gearbox external diameter | 120 mm |
| Product compatibility | BMH1402... BSH1402... |
| Reduction ratio | 15:1 |

Complementary

| | |
|--------------------------|--|
| Torsional backlash | < 12 arc.min |
| Torsional rigidity | 13 N.m/arcmin |
| Housing colour | Black |
| Housing material | Black anodized aluminium |
| Shaft material | C 45 |
| Additional information | Lubricated for life |
| Service life in hours | At 100 rpm at 30 °C |
| Efficiency | 94 % |
| Maximum radial force Fr | 1500 N at 100 rpm, force applied at mid-distance from output shaft during 30000 hour at 30 °C 2000 N at 100 rpm, force applied at mid-distance from output shaft during 10000 hour at 30 °C |
| Maximum axial force Fa | 2100 N at 100 rpm, during 30000 hour at 30°C 2800 N at 100 rpm, during 10000 hour at 30°C |
| Continuous output torque | 230 N.m at 100 rpm at 30 °C |
| Maximum output torque | 368 N.m at 100 rpm at 30 °C |
| Product weight | 8 kg |

Environment

| | |
|-----------------------------------|-----------------------|
| Noise level | 65 dB at 1 m, no-load |
| IP degree of protection | IP54 on shaft output |
| Ambient temperature for operation | -25...90 °C |

Contractual warranty

| | |
|-----------------|-----------|
| Warranty period | 18 months |
|-----------------|-----------|
