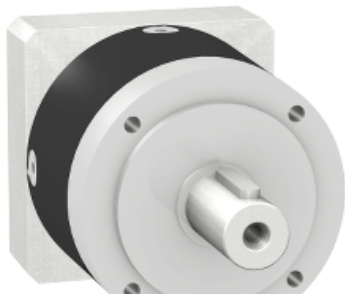


GBX1200151102G has not been replaced. Please contact your customer care center for more information.



⚠ Discontinued

Main

Range compatibility	Lexium 05
Product or component type	Planetary gearbox
Gear box type	Straight teeth
Device short name	GBX
Gearbox external diameter	120 mm
Product compatibility	BRH1102
Reduction ratio	15:1

Complementary

Torsional backlash	< 12 arc.min
Torsional rigidity	13 N.m/arcmin
Housing colour	Black
Housing material	Black anodized aluminium
Shaft material	C 45
Additional information	Lubricated for life
Service life in hours	At 100 rpm at 30 °C
Efficiency	94 %
Mounting position	Any position
Maximum radial force Fr	1500 N at 100 rpm, force applied at mid-distance from output shaft during 30000 hour at 30 °C 2000 N at 100 rpm, force applied at mid-distance from output shaft during 10000 hour at 30 °C
Maximum axial force Fa	2100 N at 100 rpm, during 30000 hour at 30°C 2800 N at 100 rpm, during 10000 hour at 30°C
Moment of inertia	2.53 g.cm ²
Continuous output torque	230 N.m at 100 rpm at 30 °C
Maximum output torque	368 N.m at 100 rpm at 30 °C
Product weight	8 kg

Environment

Noise level	65 dB at 1 m, no-load
IP degree of protection	IP54 on shaft output
Ambient temperature for operation	-25...90 °C

Contractual warranty

Warranty period	18 months
-----------------	-----------
