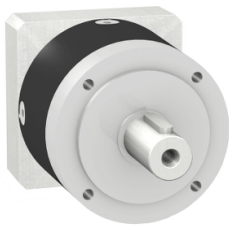


# Product data sheet

Specifications



gearbox with straight teeth GBX- Ø  
120 mm- reduction 4:1- < 8arcmin-  
155 N.m

GBX1200041401F

⚠ Discontinued

## Main

Range Compatibility	Lexium 15 Lexium 32
Product Or Component Type	Planetary gearbox
Gear Box Type	Straight teeth
Device Short Name	GBX
Gearbox External Diameter	120 mm
Product Compatibility	BSH1401...
Reduction Ratio	4:1

## Complementary

Maximum Torsional Backlash	8 arc.min
Torsional Rigidity	12 N.m/arcmin
Housing Colour	Black
Housing Material	Black anodized aluminium
Shaft Material	C 45
Additional Information	Lubricated for life
Service Life In Hours	30000 h at 100 rpm at 30 °C
Efficiency	96 %
Mounting Position	Any position
Maximum Radial Force Fr	1500 N at 100 rpm, force applied at mid-distance from output shaft during 30000 hour at 30 °C 2000 N at 100 rpm, force applied at mid-distance from output shaft during 10000 hour at 30 °C
Maximum Axial Force Fa	2100 N at 100 rpm, during 30000 hour at 30°C 2800 N at 100 rpm, during 10000 hour at 30°C
Moment Of Inertia	1.79 g.cm²
Continuous Output Torque	155 N.m at 100 rpm at 30 °C
Maximum Output Torque	248 N.m at 100 rpm at 30 °C
Net Weight	6 kg

## Environment

Noise Level	65 dB at 1 m, no-load
Ip Degree Of Protection	Shaft output: IP54

Disclaimer: This documentation is not intended as a substitute for and is not to be used for determining suitability or reliability of these products for specific user applications

---

Ambient Temperature For Operation	-25...90 °C
--------------------------------------	-------------

## Contractual warranty

---

Warranty	18 months
----------	-----------