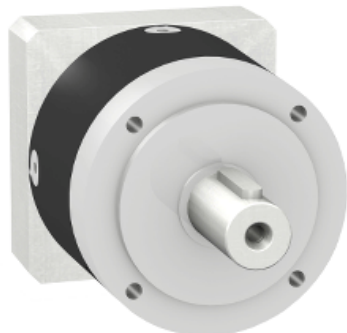


# Product data sheet

## Characteristics

# GBX1200031404F

gearbox with straight teeth GBX- Ø 120 mm-  
reduction 3:1- < 8arcmin- 115 N.m



### Main

Range compatibility	Lexium 15 Lexium 32
Product or component type	Planetary gearbox
Gear box type	Straight teeth
Device short name	GBX
Gearbox external diameter	120 mm
Product compatibility	BSH1404...
Reduction ratio	3:1

### Complementary

Torsional backlash	< 8 arc.min
Torsional rigidity	12 N.m/arcmin
Housing colour	Black
Housing material	Black anodized aluminium
Shaft material	C 45
Additional information	Lubricated for life
Service life in hours	At 100 rpm at 30 °C
Efficiency	96 %
Mounting position	Any position
Maximum radial force Fr	1500 N at 100 rpm, force applied at mid-distance from output shaft during 30000 hour at 30 °C 2000 N at 100 rpm, force applied at mid-distance from output shaft during 10000 hour at 30 °C
Maximum axial force Fa	2100 N at 100 rpm, during 30000 hour at 30°C 2800 N at 100 rpm, during 10000 hour at 30°C
Moment of inertia	2.63 g.cm <sup>2</sup>
Continuous output torque	115 N.m at 100 rpm at 30 °C
Maximum output torque	184 N.m at 100 rpm at 30 °C
Product weight	6 kg

### Environment

Noise level	65 dB at 1 m, no-load
IP degree of protection	IP54 on shaft output
Ambient temperature for operation	-25...90 °C

## Contractual warranty

Warranty period	18 months
-----------------	-----------

GBX1200031404F is replaced by the following group of products:



**Gearboxes GBK1201400F**  
adaptation kit for motor/gear-box combination  
Qty 1



**Gearboxes GBX120003K**  
gearbox straight teeth GBX - Ø 120 mm - reduction 3:1 < 7 arc.min - 115 N.m  
Qty 1

Reason for Substitution: End of life | Substitution date: 01 July 2012