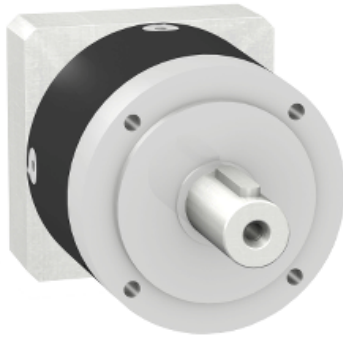


Product data sheet

Characteristics

GBX0801000551F

gearbox with straight teeth GBX- Ø 80 mm-
reduction 100:1- < 16arcmin- 120 N.m



Main

Range compatibility	Lexium 15 Lexium 32
Product or component type	Planetary gearbox
Gear box type	Straight teeth
Device short name	GBX
Gearbox external diameter	80 mm
Product compatibility	BSH0551...
Reduction ratio	100:1

Complementary

Torsional backlash	< 16 arc.min
Torsional rigidity	6.3 N.m/arcmin
Housing colour	Black
Housing material	Black anodized aluminium
Shaft material	C 45
Additional information	Lubricated for life
Service life in hours	At 100 rpm at 30 °C
Efficiency	90 %
Mounting position	Any position
Maximum radial force Fr	650 N at 100 rpm, force applied at mid-distance from output shaft during 30000 hour at 30 °C 950 N at 100 rpm, force applied at mid-distance from output shaft during 10000 hour at 30 °C
Maximum axial force Fa	1200 N at 100 rpm, during 10000 hour at 30°C 900 N at 100 rpm, during 30000 hour at 30°C
Moment of inertia	0.44 g.cm ²
Continuous output torque	120 N.m at 100 rpm at 30 °C
Maximum output torque	192 N.m at 100 rpm at 30 °C
Product weight	3.1 kg

Environment

Noise level	60 dB at 1 m, no-load
IP degree of protection	IP54 on shaft output
Ambient temperature for operation	-25...90 °C

Contractual warranty

Warranty period	18 months
-----------------	-----------
