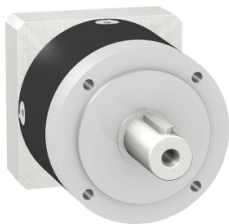


# Product data sheet

Specifications



gearbox with straight teeth GBX- Ø 80 mm- reduction 80:1- < 16arcmin- 120 N.m

GBX0800801401F

⚠ Discontinued on: Mar 31, 2022

⚠ Discontinued

## Main

Range Compatibility	Lexium 32
Product Or Component Type	Planetary gearbox
Gear Box Type	Straight teeth
Device Short Name	GBX
Gearbox External Diameter	80 mm
Product Compatibility	BSH1401... BMH1401...
Reduction Ratio	80:1

## Complementary

Maximum Torsional Backlash	16 arc.min
Torsional Rigidity	6.3 N.m/arcmin
Housing Colour	Black
Housing Material	Black anodized aluminium
Shaft Material	C 45
Additional Information	Lubricated for life
Service Life In Hours	30000 h at 100 rpm at 30 °C
Efficiency	94 %
Maximum Radial Force Fr	650 N at 100 rpm, force applied at mid-distance from output shaft during 30000 hour at 30 °C 950 N at 100 rpm, force applied at mid-distance from output shaft during 10000 hour at 30 °C
Maximum Axial Force Fa	1200 N at 100 rpm, during 10000 hour at 30°C 900 N at 100 rpm, during 30000 hour at 30°C
Continuous Output Torque	120 N.m at 100 rpm at 30 °C
Maximum Output Torque	192 N.m at 100 rpm at 30 °C
Net Weight	3.1 kg

## Environment

Noise Level	60 dB at 1 m, no-load
Ip Degree Of Protection	Shaft output: IP54
Ambient Temperature For Operation	-25...90 °C

Disclaimer: This documentation is not intended as a substitute for and is not to be used for determining suitability or reliability of these products for specific user applications

## Packing Units

Unit Type Of Package 1	PCE
Number Of Units In Package 1	1

## Contractual warranty

Warranty	18 months
----------	-----------