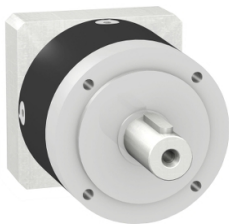


# Product data sheet

Specifications



gearbox with straight teeth GBX- Ø 80 mm- reduction 9:1- < 14arcmin- 130 N.m

GBX0800091101G

⚠ Discontinued

## Main

Range Compatibility	Lexium 05
Product Or Component Type	Planetary gearbox
Gear Box Type	Straight teeth
Device Short Name	GBX
Gearbox External Diameter	80 mm
Product Compatibility	BRH1101
Reduction Ratio	9:1

## Complementary

Maximum Torsional Backlash	14 arc.min
Torsional Rigidity	6.5 N.m/arcmin
Housing Colour	Black
Housing Material	Black anodized aluminium
Shaft Material	C 45
Additional Information	Lubricated for life
Service Life In Hours	30000 h at 100 rpm at 30 °C
Efficiency	94 %
Mounting Position	Any position
Maximum Radial Force Fr	650 N at 100 rpm, force applied at mid-distance from output shaft during 30000 hour at 30 °C 950 N at 100 rpm, force applied at mid-distance from output shaft during 10000 hour at 30 °C
Maximum Axial Force Fa	1200 N at 100 rpm, during 10000 hour at 30°C 900 N at 100 rpm, during 30000 hour at 30°C
Moment Of Inertia	0.74 g.cm²
Continuous Output Torque	130 N.m at 100 rpm at 30 °C
Maximum Output Torque	208 N.m at 100 rpm at 30 °C
Net Weight	2.6 kg

## Environment

Noise Level	60 dB at 1 m, no-load
Ip Degree Of Protection	Shaft output: IP54

Disclaimer: This documentation is not intended as a substitute for and is not to be used for determining suitability or reliability of these products for specific user applications

---

Ambient Temperature For Operation	-25...90 °C
--------------------------------------	-------------

## Contractual warranty

---

Warranty	18 months
----------	-----------