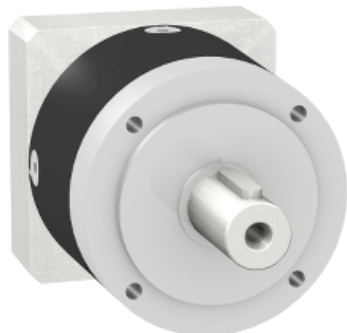


# Product data sheet

## Characteristics

# GBX0400120552F

gearbox with straight teeth GBX- Ø 40 mm-  
reduction 12:1- < 28arcmin- 20 N.m



### Main

Range compatibility	Lexium 15 Lexium 32
Product or component type	Planetary gearbox
Gear box type	Straight teeth
Device short name	GBX
Gearbox external diameter	40 mm
Product compatibility	BSH0552...
Reduction ratio	12:1

### Complementary

Torsional backlash	< 28 arc.min
Torsional rigidity	1.1 N.m/arcmin
Housing colour	Black
Housing material	Black anodized aluminium
Shaft material	C 45
Additional information	Lubricated for life
Service life in hours	At 100 rpm at 30 °C
Efficiency	94 %
Mounting position	Any position
Maximum radial force Fr	160 N at 100 rpm, force applied at mid-distance from output shaft during 30000 hour at 30 °C 200 N at 100 rpm, force applied at mid-distance from output shaft during 10000 hour at 30 °C
Maximum axial force Fa	160 N at 100 rpm, during 30000 hour at 30 °C 200 N at 100 rpm, during 10000 hour at 30 °C
Moment of inertia	0.029 g.cm <sup>2</sup>
Continuous output torque	20 N.m at 100 rpm at 30 °C
Maximum output torque	32 N.m at 100 rpm at 30 °C
Product weight	0.45 kg

### Environment

Noise level	55 dB at 1 m, no-load
IP degree of protection	IP54 on shaft output
Ambient temperature for operation	-25...90 °C

## Contractual warranty

Warranty period 18 months

GBX0400120552F is replaced by the following group of products:



**Gearboxes GBK0600550F**  
adaptation kit for motor/gear-box combination  
Qty 1



**Gearboxes GBX060012K**  
gearbox straight teeth GBX - Ø 60 mm - reduction 12:1 < 12 arc.min - 44 N.m  
Qty 1

Reason for Substitution: End of life | Substitution date: 01 July 2012