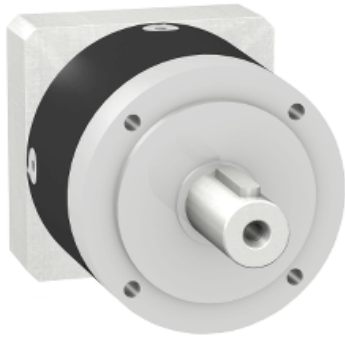


Product data sheet

Characteristics

GBX0400081403F

gearbox with straight teeth GBX- Ø 40 mm-
reduction 8:1- < 30arcmin- 6 N.m



Main

Range compatibility	Lexium 32
Product or component type	Planetary gearbox
Gear box type	Straight teeth
Device short name	GBX
Gearbox external diameter	40 mm
Product compatibility	BMH1403... BSH1403...
Reduction ratio	8:1

Complementary

Torsional backlash	< 30 arc.min
Torsional rigidity	1 N.m/arcmin
Housing colour	Black
Housing material	Black anodized aluminium
Shaft material	C 45
Additional information	Lubricated for life
Service life in hours	At 100 rpm at 30 °C
Efficiency	94 %
Maximum radial force Fr	160 N at 100 rpm, force applied at mid-distance from output shaft during 30000 hour at 30 °C 200 N at 100 rpm, force applied at mid-distance from output shaft during 10000 hour at 30 °C
Maximum axial force Fa	160 N at 100 rpm, during 30000 hour at 30°C 200 N at 100 rpm, during 10000 hour at 30°C
Continuous output torque	6 N.m at 100 rpm at 30 °C
Maximum output torque	10 N.m at 100 rpm at 30 °C

Environment

Noise level	55 dB at 1 m, no-load
IP degree of protection	IP54 on shaft output
Ambient temperature for operation	-25...90 °C

Disclaimer: This documentation is not intended as a substitute for and is not to be used for determining suitability or reliability of these products for specific user applications

Contractual warranty

Warranty period	18 months
-----------------	-----------
