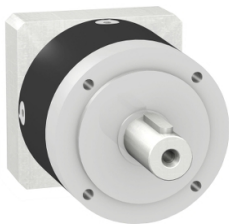


Product data sheet

Specifications



gearbox with straight teeth GBX- Ø 40 mm- reduction 3:1- < 24arcmin- 11 N.m

GBX0400030554F

⚠ Discontinued on: Mar 31, 2022

⚠ Discontinued

Main

Range Compatibility	Lexium 32
Product Or Component Type	Planetary gearbox
Gear Box Type	Straight teeth
Device Short Name	GBX
Gearbox External Diameter	40 mm
Reduction Ratio	3:1

Complementary

Maximum Torsional Backlash	24 arc.min
Torsional Rigidity	1 N.m/arcmin
Housing Colour	Black
Housing Material	Black anodized aluminium
Shaft Material	C 45
Additional Information	Lubricated for life
Service Life In Hours	30000 h at 100 rpm at 30 °C
Efficiency	94 %
Maximum Radial Force Fr	200 N at 100 rpm, force applied at mid-distance from output shaft during 10000 hour at 30 °C 160 N at 100 rpm, force applied at mid-distance from output shaft during 30000 hour at 30 °C
Maximum Axial Force Fa	200 N at 100 rpm, during 10000 hour at 30°C 160 N at 100 rpm, during 30000 hour at 30°C

Environment

Ambient Temperature For Operation	-25...90 °C
-----------------------------------	-------------

Packing Units

Unit Type Of Package 1	PCE
Number Of Units In Package 1	1

Contractual warranty

Warranty	18 months
----------	-----------

Disclaimer: This documentation is not intended as a substitute for and is not to be used for determining suitability or reliability of these products for specific user applications